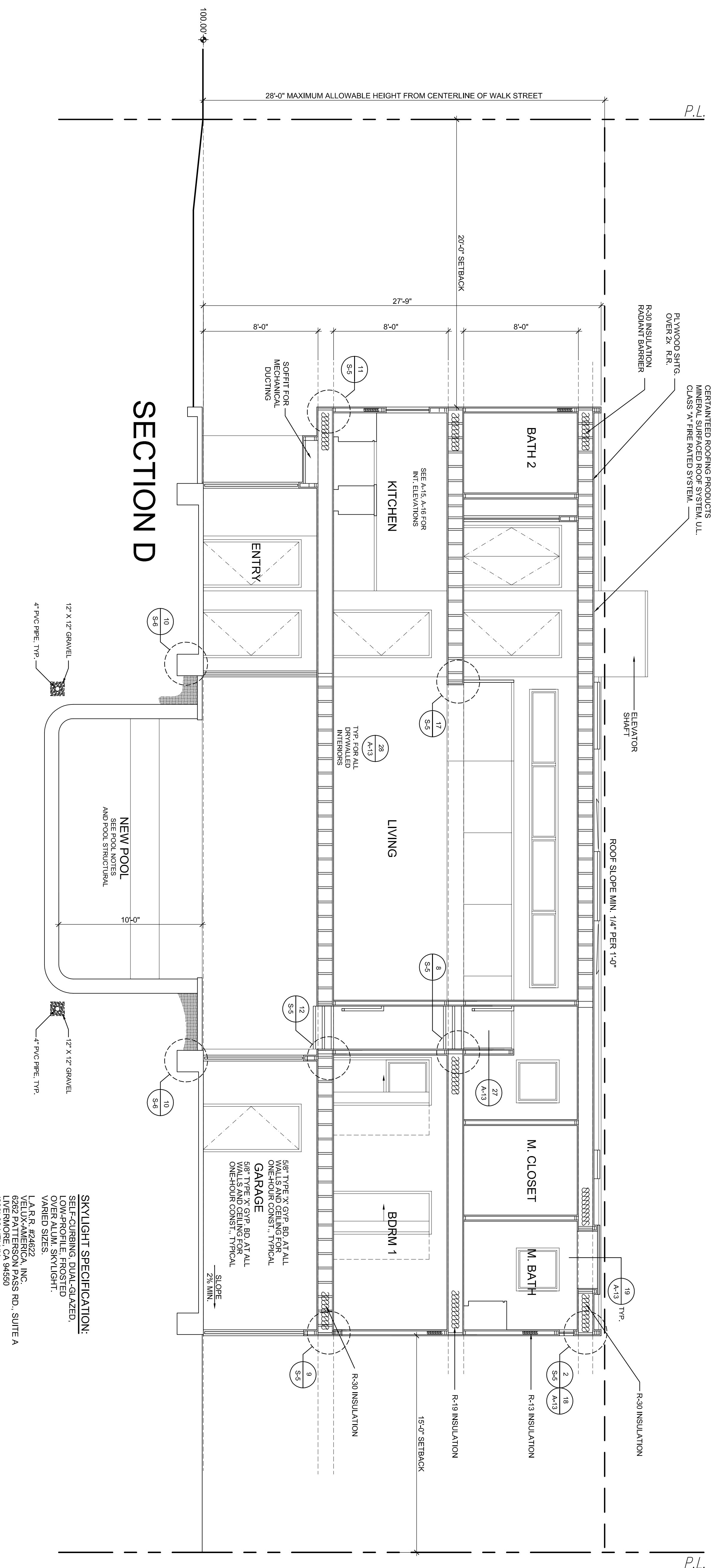


REVISIONS	BY
08.01.12	JG
08.02.12	JG
08.09.12	JG

**KENNETH DAVID LEE**  
**ARCHITECT A.I.A.**  
 13844 VENTURA BOULEVARD, SHERMAN OAKS, CA 91423  
 (818) 990 - 0391 FAX (818) 990 - 3749

**KLEIN RESIDENCE**  
**SECTIONS**

DATE: 04.23.12  
 SCALE: 1/4" = 1'-0"  
 DRAWN:  
 JOB:  
 SHEET:  
**A-7**  
 SHEETS



**SKYLIGHT SPECIFICATION:**  
 SELF-CURRING, DUAL-GLAZED,  
 LOW-PROFILE, FROSTED  
 OVER ALUM. SKYLIGHT,  
 VARIED SIZES.  
 L.A.R.R. #24822  
 VEILUX-AMERICA, INC.  
 6262 PATTERSON PASS RD., SUITE A  
 DIVERSOME, CA 94950  
 (909) 98-VELUX

5/8" TYPE 'X' GYP. BD. AT ALL  
 WALLS AND CEILING FOR  
 ONE-HOUR CONST. TYPICAL  
**GARAGE**  
 5/8" TYPE 'X' GYP. BD. AT ALL  
 WALLS AND CEILING FOR  
 ONE-HOUR CONST. TYPICAL

**SECTION D**

100.00'-0"

28'-0" MAXIMUM ALLOWABLE HEIGHT FROM CENTERLINE OF WALK STREET

P.L.

P.L.