

1636 & 1638  
ABBOT KINNEY

DU Design Universal  
ARCHITECTURE AND DESIGN

529 CALIFORNIA AVENUE  
VENICE, CALIFORNIA 90291

PH: 310.452.8161  
FX: 310.452.8171

DU ARCHITECTS@EARTHLINK.NET

CLIENT:

DONALD LEHMAN &  
MARIE THOIN-MATHESON  
PH: 310.317.1233  
FX: 310.457.5055

**STRUCTURAL ENGINEER:**  
GORDON L. POLON  
CONSULTING ENGINEERS  
1718 22ND STREET  
SANTA MONICA, CA 90404

PH: 310-998-5611  
FX: 310-829-2744

**MEP ENGINEER/TITLE 24:**  
MIRAHMAOI & ASSOCIATES  
2908 NEBRASKA AVENUE  
SANTA MONICA, CA 90404

PH: 310-453-2999  
FX: 310-453-3350

GENERAL CONTRACTOR:

PH:  
FX:

REVISIONS:

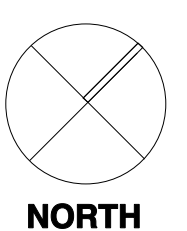
ISSUE:

- PLAN CHECK —
- PLAN CHECK REVISION
- LUPC HEARING

NOT FOR CONSTRUCTION

EXISTING PLAN/  
HANDICAP NOTES

DATE:	DRAWN:	SCALE:
3/21/07	DU	



A-1.0

EXISTING PLAN  
1/4" = 1'-0" 1

**HANDICAP NOTES**

- SITE DEVELOPMENT AND GRADING SHALL BE DESIGNED TO PROVIDE ACCESS TO ALL ENTRANCES AND EXTERIOR GROUND FLOOR EXITS AND ACCESS TO NORMAL PATHS OF TRAVEL, AND WHERE NECESSARY TO PROVIDE ACCESS, SHALL INCORPORATE PEDESTRIAN RAMPS, CURB PATHS, ECT.
- WHEN ABRUPT IN LEVEL NOT EXCEEDING 1/2" OCCUR, THEY SHALL BE BEVELED WITH A SLOPE NO GREATER THAN 1:2 EXCEPT THAT LEVEL CHANGES NOT EXCEEDING 1/4" MAY BE VERTICAL.
- ABRUPT CHANGES IN LEVEL ALONG ANY ACCESSIBLE ROUTE EXCEEDING 1/2" SHALL COMPLY WITH THE REQUIREMENTS FOR CURB RAMPS
- THERE SHALL BE A LEVEL AND CLEAR FLOOR OR LANDING ON EACH SIDE OF THE DOOR. THE LEVEL AREA SHALL HAVE A LENGTH IN THE DIRECTION OF DOOR SWING OF AT LEAST 60" AND THE LENGTH OPPOSITE THE DIRECTION OF THE DOOR SWING OF 48" AS MEASURED AT RIGHT ANGLES TO THE PLANE OF THE DOOR IN THE CLOSED POSITION.
- MAXIMUM EFFORT TO OPERATE DOORS SHALL NOT EXCEED 8 1/2 POUNDS FOR EXTERIOR DOORS AND 5 POUNDS FOR INTERIOR DOORS, SUCH PULL OR PUSH EFFORT BEING APPLIED AT RIGHT ANGLES TO HINGED DOORS AND AT THE CENTER PLANE OF SLIDING OR FOLDING DOORS. COMPENSATING DEVICES OR AUTOMATIC DOOR OPERATORS MAY BE UTILIZED TO MEET THE ABOVE STANDARDS. WHEN FIRE DOORS ARE REQUIRED, THE MAXIMUM EFFORT TO OPERATE THE DOOR MAY BE INCREASED TO THE MAXIMUM ALLOWABLE BY THE APPROPRIATE ADMINISTRATIVE AUTHORITY, NOT TO EXCEED 15 POUNDS.
- WHERE FIXED OR BUILT IN SEATING, TABLES, OR COUNTERS ARE PROVIDED FOR THE PUBLIC, AND IN GENERAL EMPLOYEE AREAS, 5% BUT NEVER LESS THAN 1 MUST BE ACCESSIBLE, AS REQUIRED IN SECTION 1122B.1
- IF SEATING FOR PEOPLE IN WHEEL CHAIRS ARE PROVIDED AT FIXED TABLES OR COUNTERS, CLEAR FLOOR SPACE COMPLYING WITH SECTION 1122B.3 SHALL BE PROVIDED. SUCH CLEAR FLOOR SPACE SHALL NOT OVERLAP KNEESPACE BY MORE THAN 19".
- WHERE A SINGLE COUNTER CONTAINS MORE THAN ONE TRANSACTION STATION, SUCH AS A BANK COUNTER WITH MULTIPLE TELLER WINDOWS OR A RETAIL SALES COUNTER WITH MULTIPLE CASH REGISTER STATIONS, AT LEAST 5% BUT NEVER LESS THAN 1% OF EACH TYPE OF STATION SHALL BE LOCATED AT A SECTION OF COUNTER THAT IS AT LEAST 36" LONG AND NO MORE THAN 28" TO 34" HIGH.
- THE INTERNATIONAL SYMBOL OF ACCESSIBILITY SHALL CONSIST OF A WHITE FIGURE ON A BLUE BACKGROUND. THE BLUE SHALL BE EQUAL TO A COLOR NUMBER 15090 IN FEDERAL STANDARD 599B.
- CONTRACTED GRADE 2 BRAILLE SHALL BE USED WHEREVER BRAILLE SYMBOLS ARE SPECIFICALLY REQUIRED IN OTHER PORTIONS OF THIS OF THESE REGULATIONS. DOTS SHALL BE 1/10" ON CENTERS IN EACH CELL WITH 2/10" SPACE BETWEEN CELLS. DOTS SHALL BE RAISED A MINIMUM OF 1/10" ABOVE THE BACK GROUND.
- WHEN PERMANENT IDENTIFICATION IS PROVIDED FOR ROOMS AND SPACES, RAISED LETTERS SHALL BE PROVIDED AND SHALL BE ACCOMPANIED BY BRAILLE IN CONFORMANCE WITH SECTIONS 1117B.5.6 THRU 1117B.5.8.3. SIGNS SHALL BE INSTALLED ON THE WALL ADJACENT TO THE LATCH SIDE OF THE DOOR, WHERE THERE IS NO WALL SPACE ON THE LATCH SIDE INCLUDING DOUBLE LEAF DOORS. SIGNS SHALL BE PLACED ON THE NEAREST ADJOINING WALL, PREFERABLY ON THE RIGHT. MOUNTING HEIGHT SHALL BE 60" ABOVE FINISHED FLOOR TO THE CENTERLINE OF THE SIGN. MOUNTING LOCATION SHALL BE DETERMINED SO THAT A PERSON MAY APPROACH WITHIN 5" OF SIGNAGE, WITHOUT ENCOUNTERING PROTRUDING OBJECTS OR STANDING WITHIN THE SWING OF THE DOOR.
- PROVIDE 5 SEATS/SPACES FOR PEOPLE USING WHEEL CHAIRS (AT LEAST ONE FOR EACH 20 SEATS, WITH AT LEAST ONE PER FUNCTIONAL AREA) INTEGRATED WITH GENERAL SEATING TO AVOID HAVING ONE AREA SPECIFICALLY HIGHLIGHTED AS THE AREA FOR PERSONS WITH DIS ABILITIES.
- THE CENTER OF ELECTRICAL AND COMMUNICATION SYSTEM RECEPTACLE OUTLETS SHALL BE INSTALLED NOT LESS THAN 15" ABOVE THE FLOOR OR WORKING PLATFORM.
- THE CENTER OF THE GRIP OF THE OPERATING HANDLE OF CONTROLS OR SWITCHES TO BE USED BY THE OCCUPANT OF THE ROOM OR AREA TO CONTROL LIGHTING AND RECEPTACLE OUTLETS, APPLIANCES, OR COOLING HEATING AND VENTILATING EQUIPMENT SHALL NOT BE MORE THAN 48" ABOVE THE FLOOR OR WORKING PLATFORM.
- ALL BUILDING ENTRANCES THAT ARE ACCESSIBLE TO AND USABLE BY PERSONS OF DISABILITIES AND AT EVERY MAJOR JUNCTION ALONG OR LEADING TO AN ACCESSIBLE ROUTE OF TRAVEL SHALL BE IDENTIFIED WITH A SIGN DISPLAYING THE INTERNATIONAL SYMBOL OF ACCESSIBILITY AND WITH ADDITIONAL DIRECTIONAL SIGNS, AS REQUIRED TO BE VISIBLE TO PERSONS ALONG APPROACHING PEDESTRIAN WAYS. (1117B.5.8.1.2 & 1127B.3)

**ACCESSIBILITY NOTES:**

- GRAB BARS**
- THE STRUCTURAL STRENGTH OF GRAB BARS, TUB, SHOWER SEATS FASTENERS, AND MOUNTING DEVICES SHALL MEET THE FOLLOWING SPECIFICATIONS:
    - BENDING STRESS IN A GRAB BAR OR SEAT INDUCED BY THE MAXIMUM BENDING MOMENT FROM THE APPLICATION OF A 250 LB. POINT LOAD SHALL BE LESS THAN THE ALLOWABLE STRESS FOR THE MATERIAL OF THE GRAB BAR OR SEAT.
    - SHEAR STRESS INDUCED IN A GRAB BAR OR SEAT BY THE APPLICATION OF A 250 LB. POINT LOAD SHALL BE LESS THAN THE ALLOWABLE SHEAR STRESS FOR THE MATERIAL OF THE GRAB BAR OR SEAT, AND ITS MOUNTING BRACKET OR OTHER SUPPORT IS CONSIDERED TO BE FULLY RESTRAINED, THEN DIRECT AND TORSIONAL SHEAR STRESSES SHALL NOT EXCEED THE ALLOWABLE SHEAR STRESS.
    - SHEAR FORCE INDUCED IN FASTENER OR MOUNTING DEVICES FROM THE APPLICATION OF A 250 LB. POINT LOAD, SHALL BE LESS THAN THE ALLOWABLE LATERAL LOAD OF EITHER THE FASTENER OR THE MOUNTING DEVICE OR THE SUPPORTING STRUCTURE, WHICHEVER HAS THE SMALLER ALLOWABLE LOAD.
    - TENSILE FORCE INDUCED IN A FASTENER BY A DIRECT TENSION FORCE OF A 250 LB. POINT LOAD, PLUS THE MAXIMUM MOMENT FROM THE APPLICATION OF A 250 LB. POINT LOAD SHALL BE LESS THAN THE ALLOWABLE WITHDRAWAL LOAD BETWEEN THE FASTENER AND THE SUPPORTING STRUCTURE.
    - GRAB BARS SHALL NOT ROTATE IN THEIR FITTINGS.
  - GRAB BARS AT THE SIDE SHALL BE AT LEAST 42" LONG WITH THE FRONT END POSITIONED 24" IN FRONT OF THE WATER CLOSET STOOL AND WITH THE BACK END POSITIONED NO MORE THAN 12" FROM THE REAR WALL. GRAB BARS AT THE BACK SHALL BE NOT LESS THAN 36" LONG. (1115B.8.1, FIG 11B-1 A,B, & C)
  - GRAB BAR GRIPPING SURFACE DIAMETER SHALL BE 1-1/4" TO 1-1/2" NOMINAL. THE SPACE BETWEEN THE WALL AND THE GRAB BAR SHALL BE 1-1/2".

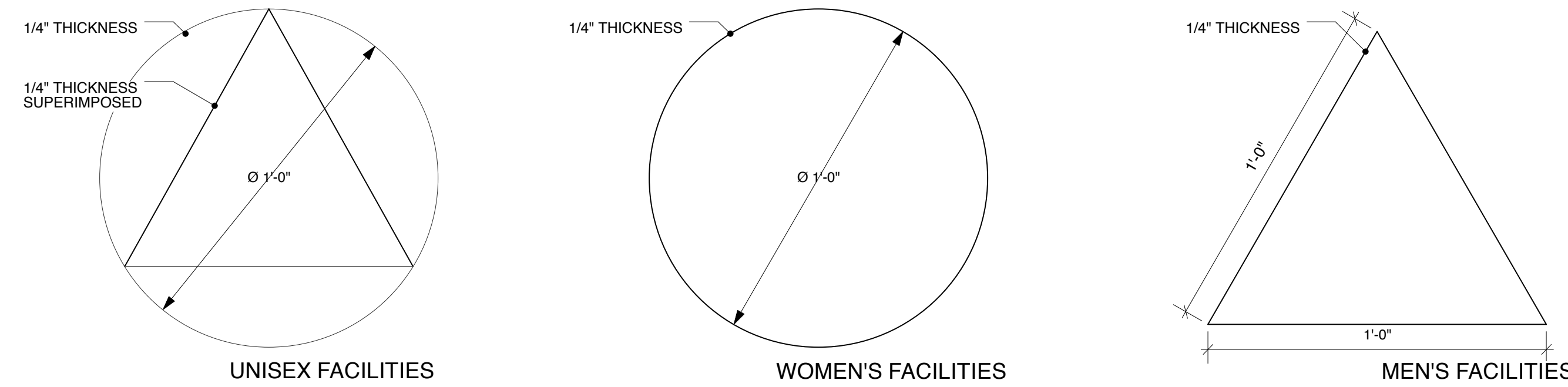
**SANITARY FACILITY FIXTURES AND ACCESSORIES**

- THE HEIGHT OF ACCESSIBLE WATER CLOSETS SHALL BE A MINIMUM OF 17" AND A MAXIMUM OF 19" MEASURED TO THE TOP OF A MAXIMUM 2" HIGH TOILET SEAT, EXCEPT THAT 3" SEATS SHALL BE PERMITTED ONLY IN ALTERATIONS WHERE THE EXISTING FIXTURE IS LESS THAN 15" HIGH.
- ALL LAVATORIES THAT ARE DESIGNED TO BE ACCESSIBLE SHALL BE MOUNTED WITH THE RIM OR COUNTER EDGE NO HIGHER THAN 34" ABOVE THE FINISHED FLOOR AND WITH A VERTICAL CLEARANCE MEASURED FROM THE BOTTOM OF THE APRON OR OUTSIDE BOTTOM EDGE OF THE LAVATORY OF 29", REDUCING TO 27" AT A POINT LOCATED 8" BACK FROM THE FRONT EDGE. KNEE CLEARANCE SHALL BE THE SAME WIDTH AND SHALL BE A MINIMUM OF 9" HIGH FROM THE FLOOR AND A MINIMUM OF THE 17" DEEP FROM THE FRONT OF THE LAVATORY.
- WHERE TOWEL, SANITARY NAPKINS, WASTE RECEPTACLES, AND OTHER SIMILAR DISPENSING AND DISPOSAL FIXTURES ARE PROVIDED, AT LEAST ONE OF EACH TYPE SHALL BE LOCATED WITH ALL OPERABLE PARTS, INCLUDING COIN SLOTS, WITHIN 40" FROM THE FINISHED FLOOR.
- TOILET TISSUE DISPENSERS SHALL BE LOCATED ON THE WALL WITHIN 12" OF THE FRONT EDGE OF THE TOILET SEAT AND NO LOWER THAN 19" FROM THE FLOOR. DISPENSERS THAT CONTROL DELIVERY OR THAT DO NOT PERMIT CONTINUOUS PAPER FLOW SHALL NOT BE USED.
- HOT WATER AND DRAIN PIPES UNDER ACCESSIBLE LAVATORIES SHALL BE INSULATED OR OTHERWISE COVERED. THERE SHALL BE NO SHARP OR ABRASIVE SURFACES UNDER LAVATORIES.
- CONTROLS FOR WATER CLOSET FLUSH VALVES SHALL BE MOUNTED ON THE WIDE SIDE OF TOILET AREAS.

**HANDICAP IDENTIFICATION SYMBOLS**  
3"=1'-0" 4

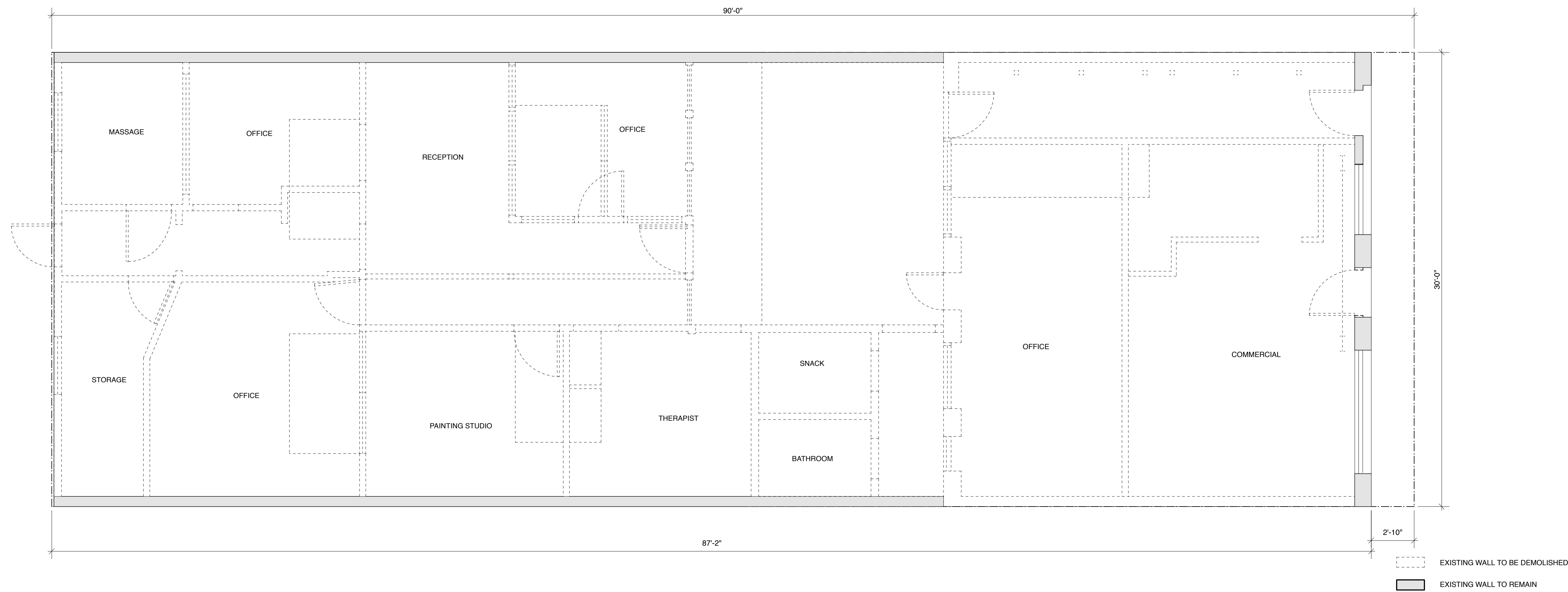
**FACILITIES ACCESSIBILITY NOTES**  
N.T.S. 3

**HANDICAP NOTES**  
N.T.S. 2



**NOTES:**

- GEOMETRIC SYMBOLS ON SANITARY FACILITY DOORS SHALL BE CENTERED ON THE DOOR AT A HEIGHT OF 60" AND THEIR COLOR AND CONTRAST SHALL BE DISTINCTLY DIFFERENT FROM THE COLOR AND CONTRAST OF THE DOOR. (1115B.5)



EXISTING PLAN  
1/4" = 1'-0" 1