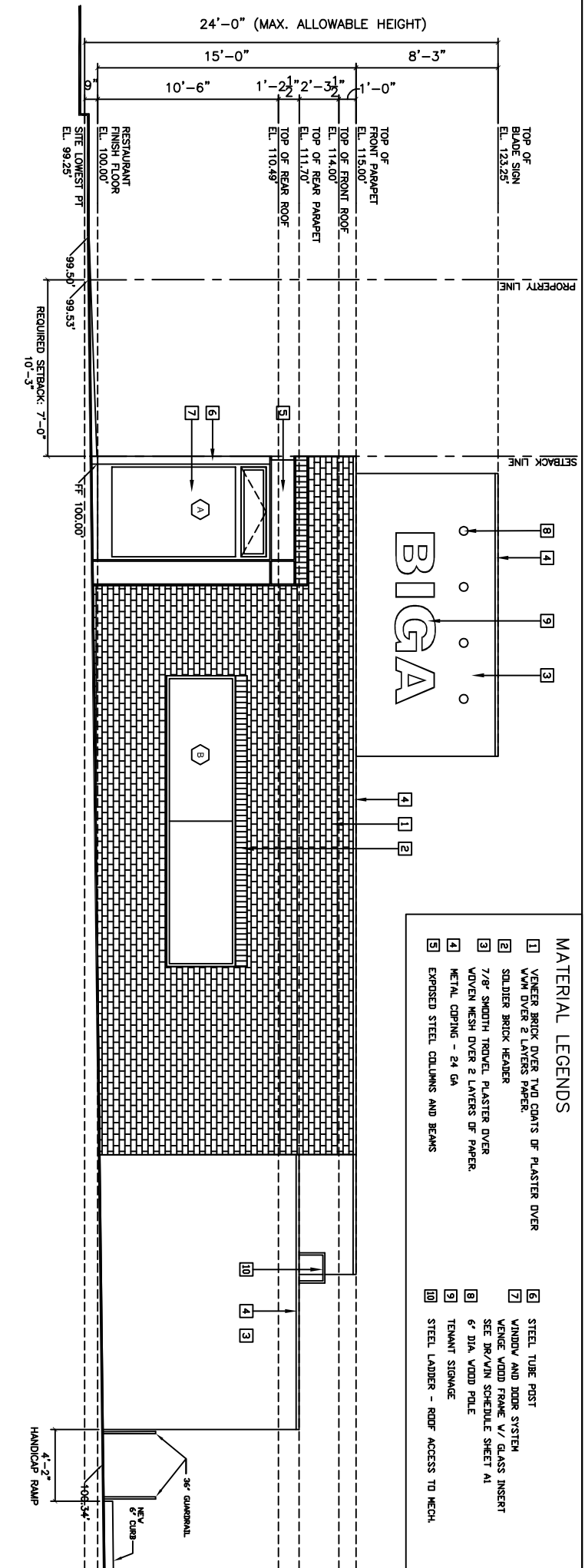


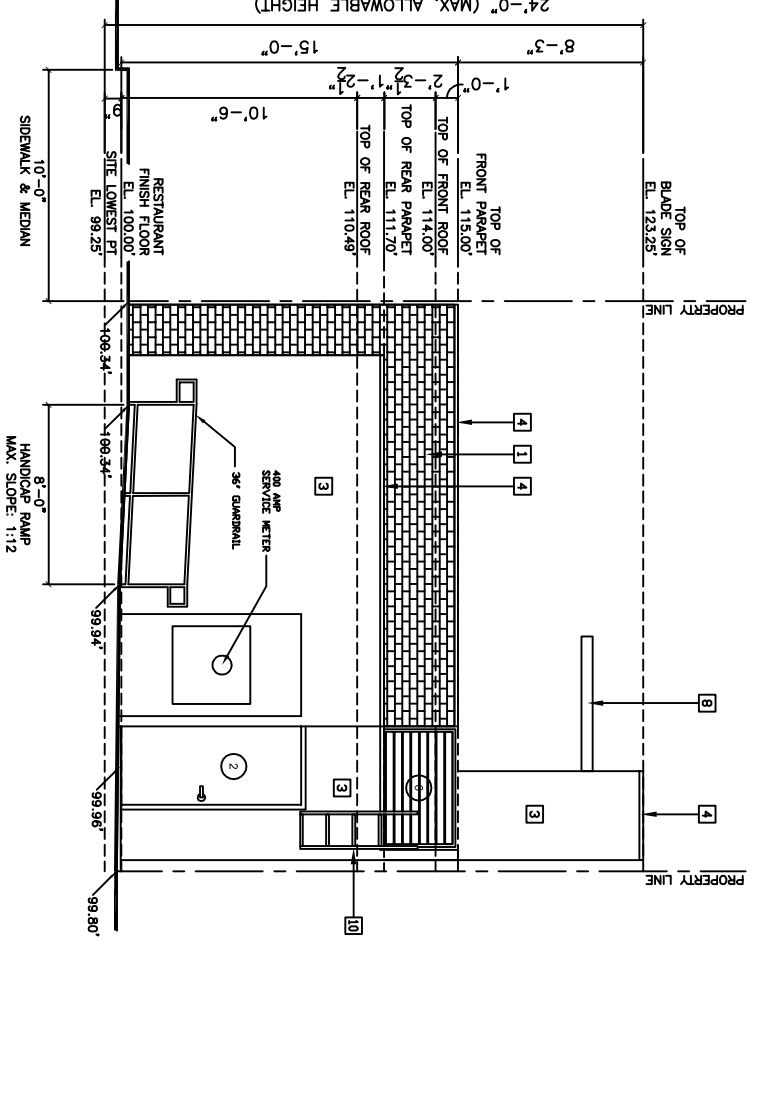
**A**  
**SOUTH ELEVATION - ROSE AVE**  
 SCALE: 1/4" = 1'-0"



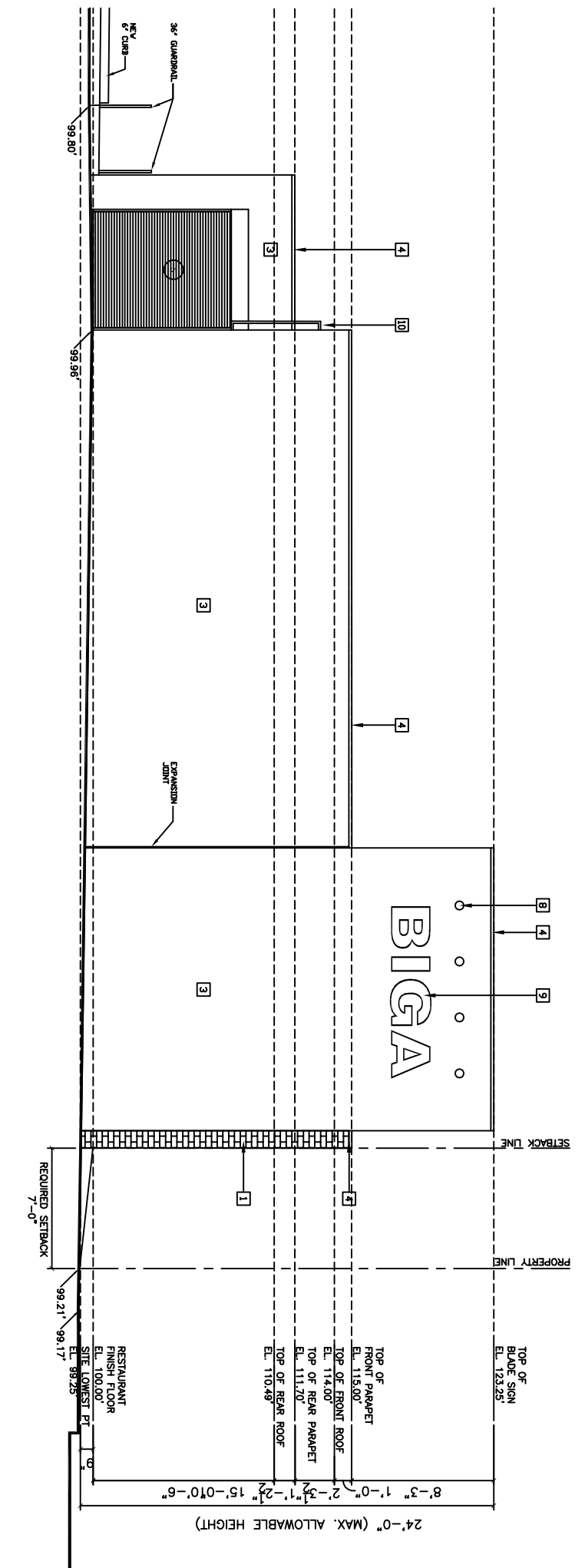
**B**  
**EAST ELEVATION - DIMMICK AVE**  
 SCALE: 1/4" = 1'-0"



- MATERIAL LEGENDS**
- 1 VENEER BRICK OVER TWO COATS OF PLASTER OVER W/M OVER 2 LAYERS PAPER
  - 2 SOLDIER BRICK HEADER
  - 3 7/8" SMOOTH TROWEL PLASTER OVER ADVEN MESH OVER 2 LAYERS OF PAPER
  - 4 METAL COPING - 24 GA
  - 5 EXPOSED STEEL COLUMNS AND BEAMS
  - 6 STEEL TUBE POST
  - 7 WINDOW AND DOOR SYSTEM
  - 8 VENGIE WOOD FRAME V/G GLASS INSERT SEE DW/VIN SCHEDULE SHEET A1
  - 9 6" DIA. VOOD POLE
  - 10 TENANT SIGNAGE
  - 11 STEEL LADDER - ROOF ACCESS TO MECH.



**C**  
**NORTH ELEVATION - ALLEY**  
 SCALE: 1/4" = 1'-0"



**D**  
**WEST ELEVATION - SIDNEYARD**  
 SCALE: 1/4" = 1'-0"



**BIG A**  
 533 ROSE AVE,  
 VENICE, CA 90291

DATE	ISSUE/REVISION

**ELEVATIONS**  
 1/4" = 1'-0"  
**A 6**

P: 310-584-4486  
 F: 310-774-0907  
 WWW.GOKA.HIGH.COM