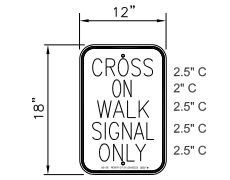
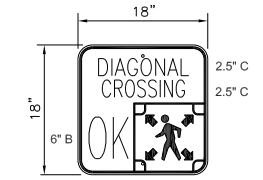
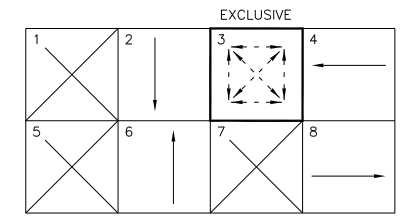


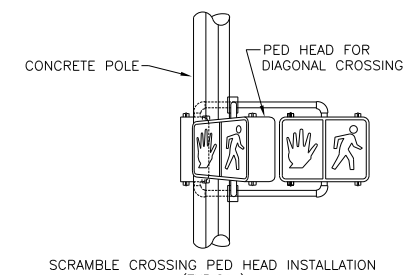
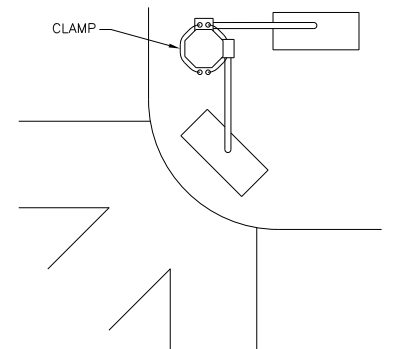
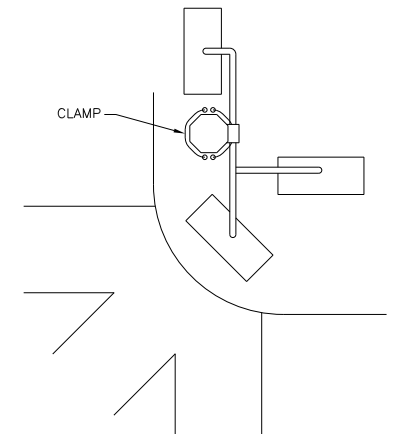
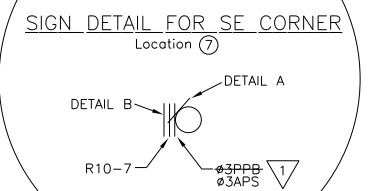
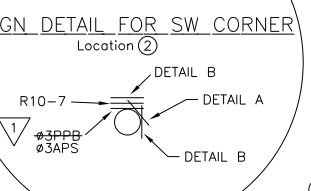
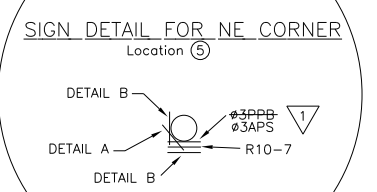
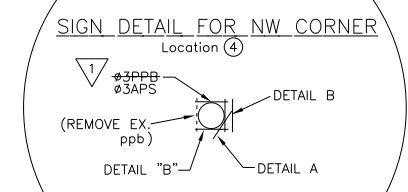
SIGNAL STANDARD SCHEDULE					
No.	TYPE	FOUND. TYPE	PED. PUSH BUTN TYPE	PHASE	REMARKS
1	332 Cab.	F-332*			ATSAC 2070 Controller on 332 Cabinet
2	CD807-T	BSL	APS(3P)	3	Install APS
3	7	F-7	APS(3P)	3	Install APS
4	7	F-7	APS(3P)	3	Install APS
5	CD807-T	BSL	APS(3P)	3	Install APS
6	1	F-1	APS(3P)	3	Install APS

- NOTES :
- SEMI-ACTUATED OPERATION (ATSAC 2070 CONTROLLER IN 332 CABINET)
 02 - PACIFIC AVE SB
 03 - PED. XINGS
 04 - WINDWARD AVE. WB
 06 - PACIFIC AVE NB
 08 - WINDWARD AVE. EB
 MAR VISTA ATSAC SYSTEM
 DIRECT WIRE (CABLE) INTERCONNECT
 - REMOVE EXISTING CONTROLLER; INSTALL ATSAC 2070 CONTROLLER IN EXISTING CABINET.
 - INSTALL STRIPING AND/OR PAVEMENT MARKINGS AS SHOWN.
 - REMOVE AND SALVAGE SPECTRUM RADIO. DELIVER SALVAGED SPECTRUM RADIO TO WESTERN YARD.
 - RENUMBER LOOPS AS SHOWN.
 - REMOVE PEDESTRIAN PUSHBUTTON AND PLUG HOLE.
 - INSTALL MODIFIED R10-3e PEDESTRIAN PUSHBUTTON SIGNS. SEE DETAIL D.
 - ALL NEW PEDESTRIAN HEADS SHALL BE COUNTDOWN PEDESTRIAN HEADS.
 - INSTALL SIGN(S), OR SIGN(S) AND POST(S) AS SHOWN.
 - INSTALL ACCESSIBLE PEDESTRIAN SIGNAL PER LADOT STANDARD DRAWING S-73.2.

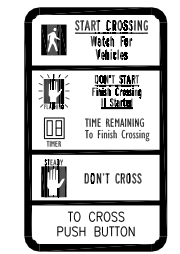


DETAIL A
not to scale

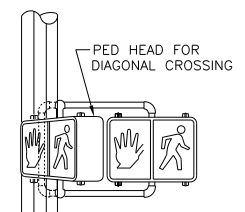
DETAIL B
not to scale



DETAIL C (Typical)
not to scale



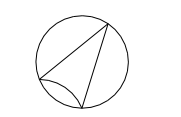
DETAIL D
not to scale



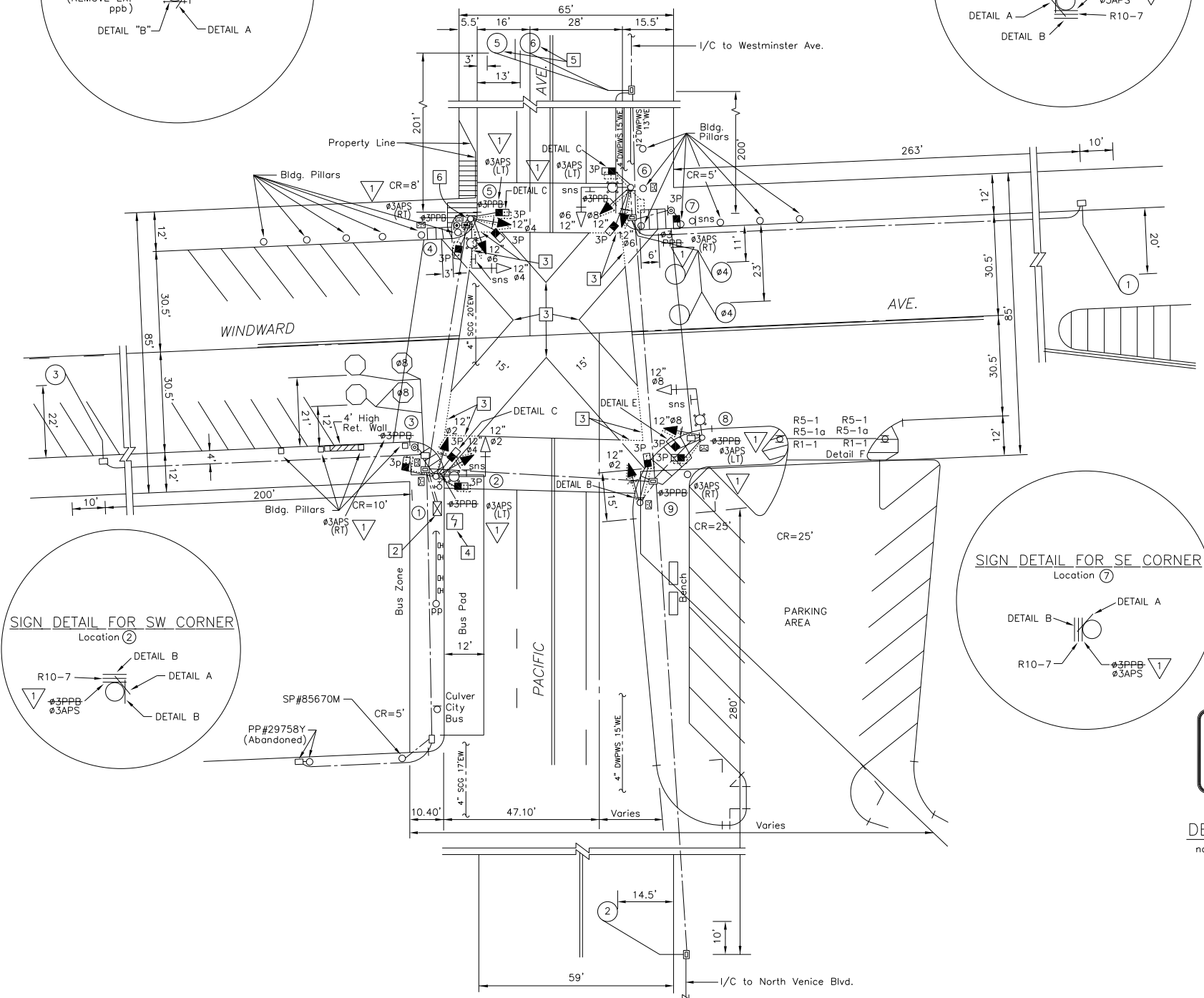
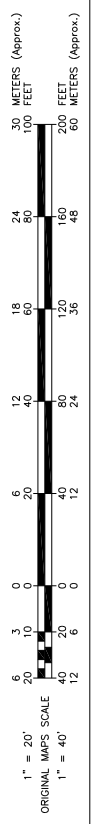
DETAIL E
not to scale



DETAIL F
not to scale



Scale: 1" = 20'
North/South: Pacific Ave.



NO.	REVISION	DESCRIPTION	DATE	ENGR.
1	INSTALL APS AT LOCATIONS 2,3,4,5,6,7,8,9	SEAN SKEHAN	3-12-09	

BY	DATE	SUPERVISOR	DATE
BC	05-20-08	DESIGNER	06-03-08
BS	05-30-08	SR. DRAFTING	06-12-08
		DRAFTING	12-08-08
		FIELD	06-16-08
		BASE	12-12-07
			12-05-07



DEPARTMENT MODIFICATION - SCRAMBLE CROSSWALK

SUBMITTED JUNE 30, 2008	RECOMMENDED JULY 3, 2008	APPROVED JULY 8, 2008
JOHN VARGHESE Transportation Engineer	JUDY WONG Senior Transportation Engineer	SEAN SKEHAN Principal Transportation Engineer

AS BUILT		CITY OF LOS ANGELES DEPARTMENT OF TRANSPORTATION RITA L. ROBINSON, General Manager	
Date of installation: 3-12-09	LADOT Inspector: G. NOCIFORE	TITLE	
Condition As Of:	LADOT Engineer:	PACIFIC AVE. & WINDWARD AVE.	
District: WESTERN	Thomas Guide: 671 H6	File Name: 20890-T1.DWG	Intersection No.: 20890
References: FIELD, Proj. No. 74224 (As built 2/19/98), DM 106.5 A 143, FB 105-141 p131	Project No.: 50150	NOTICE: IF PLAN HAS NOT BEEN IMPLEMENTED WITHIN TWO (2) YEARS OF THE APPROVAL DATE, IT MUST BE RESUBMITTED TO LADOT SIGNAL DESIGN SECTION FOR REVIEW AND APPROVAL.	