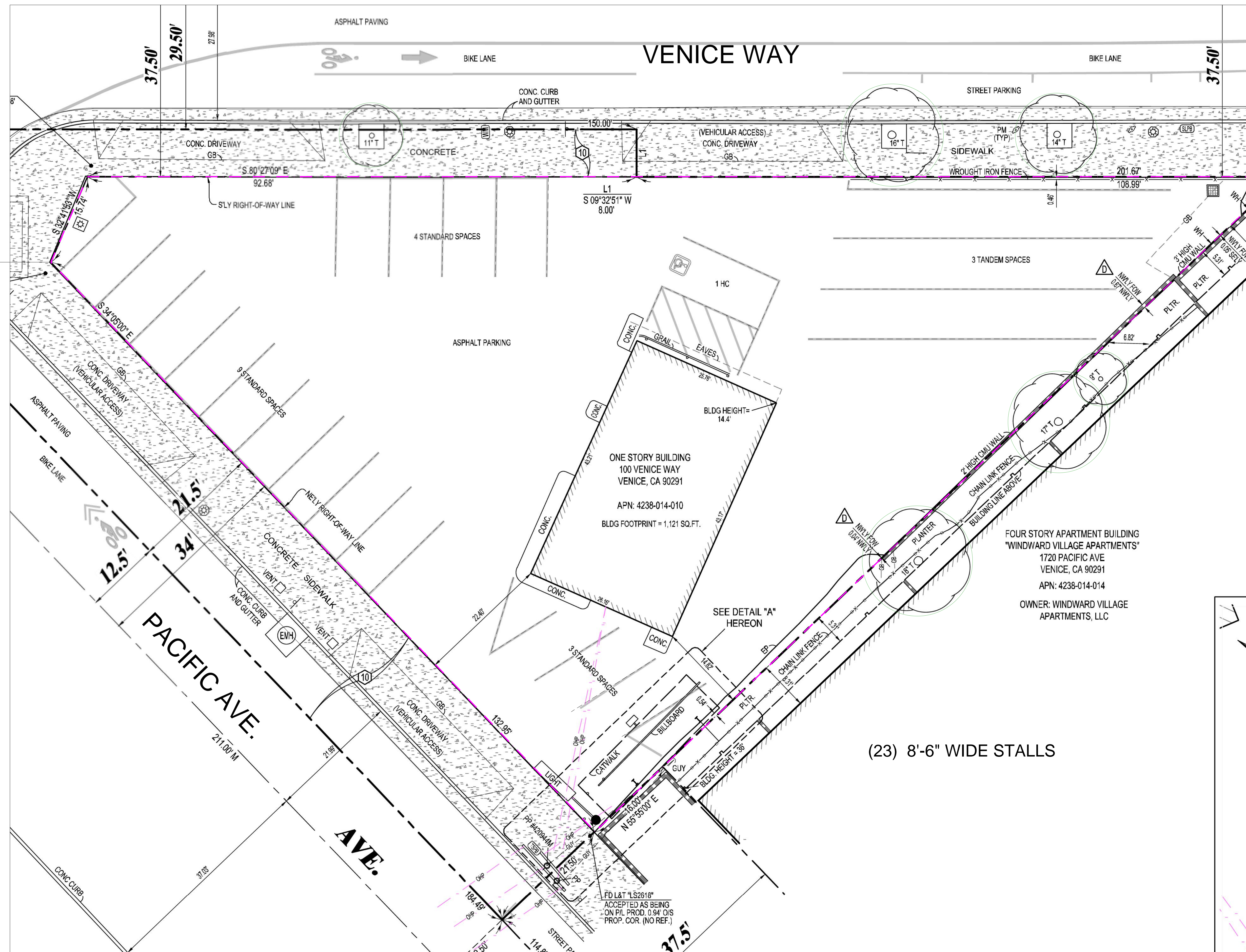


SURFACE PARKING LOT STUDY

100 E. VENICE WAY, VENICE, CA



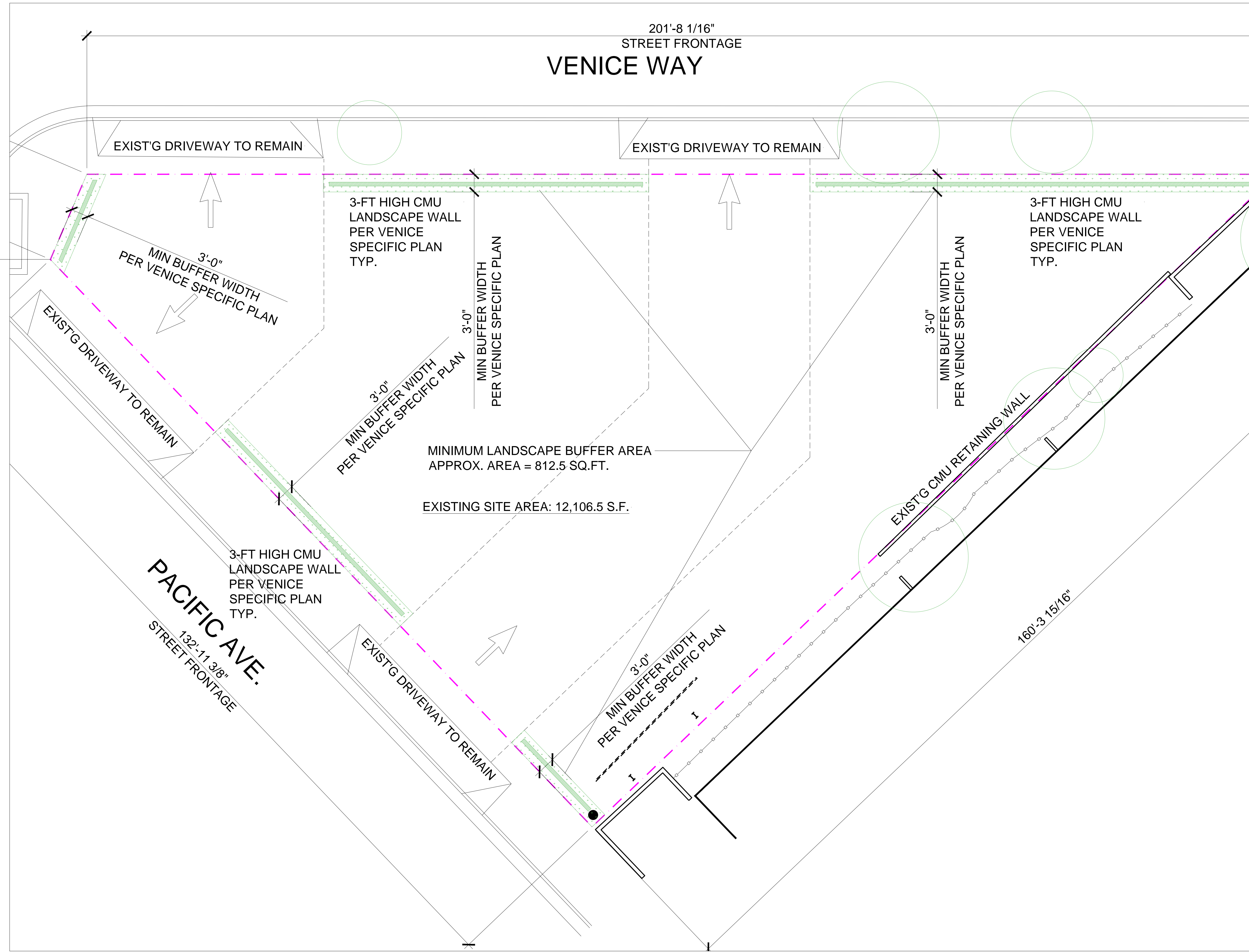
PARKING LEGEND

EXISTING SITE

SURFACE PARKING LOT STUDY
 100 E. VENICE WAY, VENICE, CA

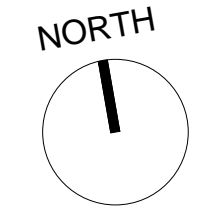


WC PROJ. # - 37-009909.00

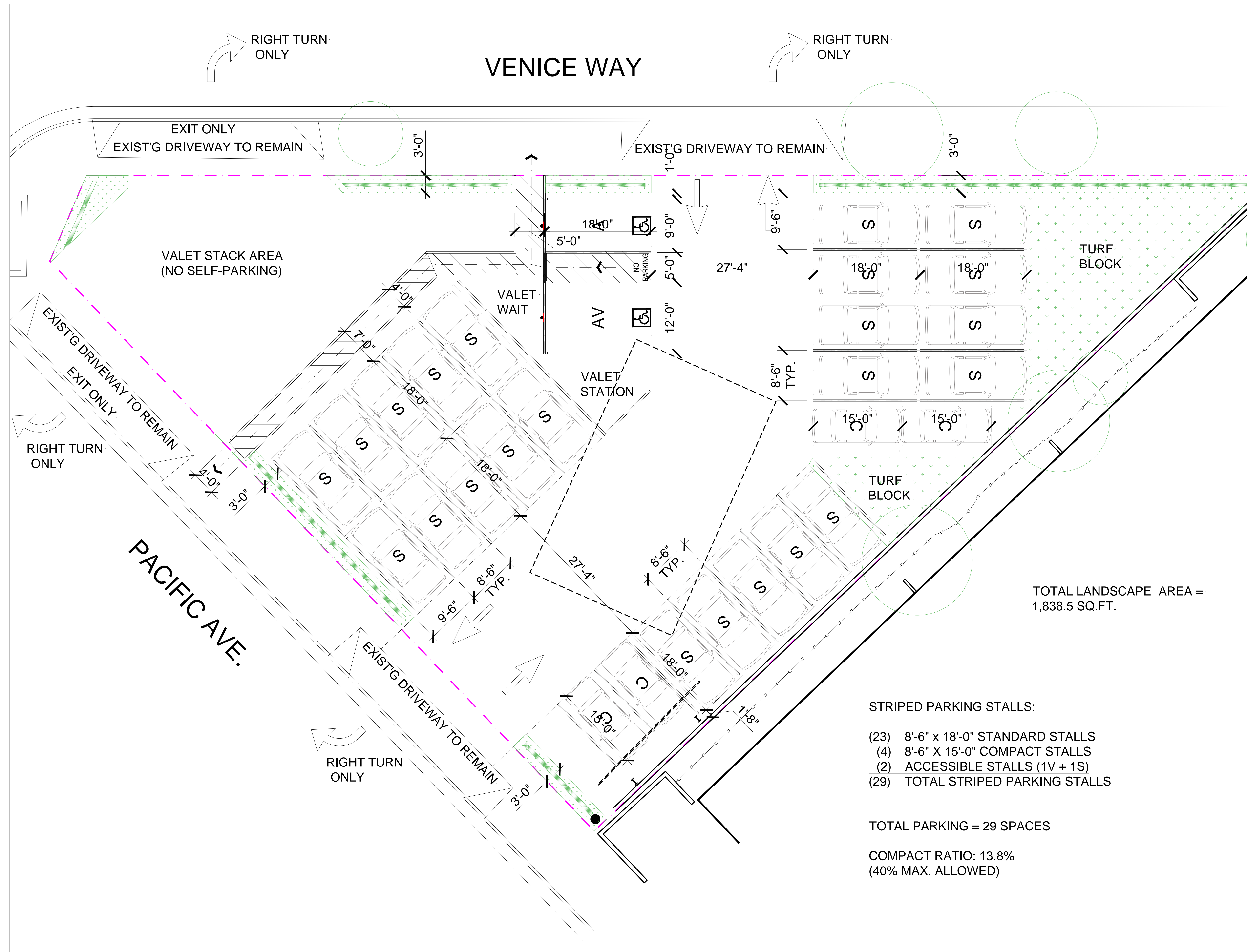


PARKING LEGEND

EXISTING SITE
MIN. LANDSCAPE REQUIREMENTS



SURFACE PARKING LOT STUDY
 100 E. VENICE WAY, VENICE, CA



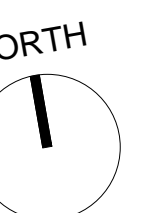
PARKING LEGEND

- STRIPED PARKING STALLS:
- (23) 8'-6" x 18'-0" STANDARD STALLS
 - (4) 8'-6" x 15'-0" COMPACT STALLS
 - (2) ACCESSIBLE STALLS (1V + 1S)
 - (29) TOTAL STRIPED PARKING STALLS

TOTAL PARKING = 29 SPACES

COMPACT RATIO: 13.8%
 (40% MAX. ALLOWED)

TOTAL LANDSCAPE AREA =
 1,838.5 SQ.FT.



EXISTING SITE
PROPOSED STRIPING
PLAN