



CITY WILDING: SAVING L.A., ONE TREE AT A TIME
Verdant Venice Group



Verdant Venice Group (VVG)

We plant and maintain trees and native plants. We have planted over 450 trees in partnership with the City agencies.

Verdant Venice Group is

Isabelle Duvivier, Noel Johnston, Sarah Wauters, Peter Ruiz and dozens of volunteers.



Farmer's Market and Venice Blvd Tree Planting

We have planted dozens of Oak trees on Venice Blvd. with ceanothus/poppy understory plantings including at the farmer's market site.



Appleton Way Tree Planting

We have planted more than thirty native Desert Willow trees on Appleton in East Venice. We do regular maintenance which includes weeding, mulching, watering, and public education.



Westminster Dog Park

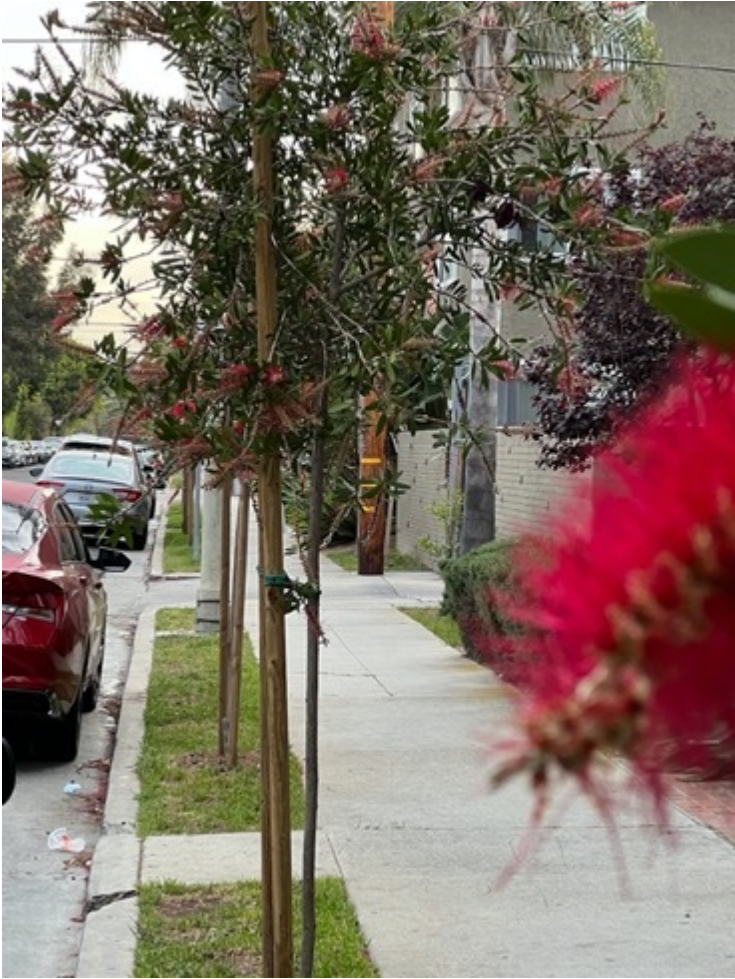
In collaboration with LA Recreation and Park, VVG planted dozens of native trees, shrubs, and perennials, in a “microforest” designed after the famous Miyawaki concept. This garden was created in 2 installments (6 months apart) totaling 4 hours and included weeding, sheet mulching, and tree/shrub planting.

<https://urban-forests.com/miyawaki-method/>



Indiana, Broadway, Vernon, and Sunset Blvd Tree Planting

We have planted over a hundred trees on low-income properties in Oakwood. We do regular maintenance which includes weeding, mulching, watering, and public education.

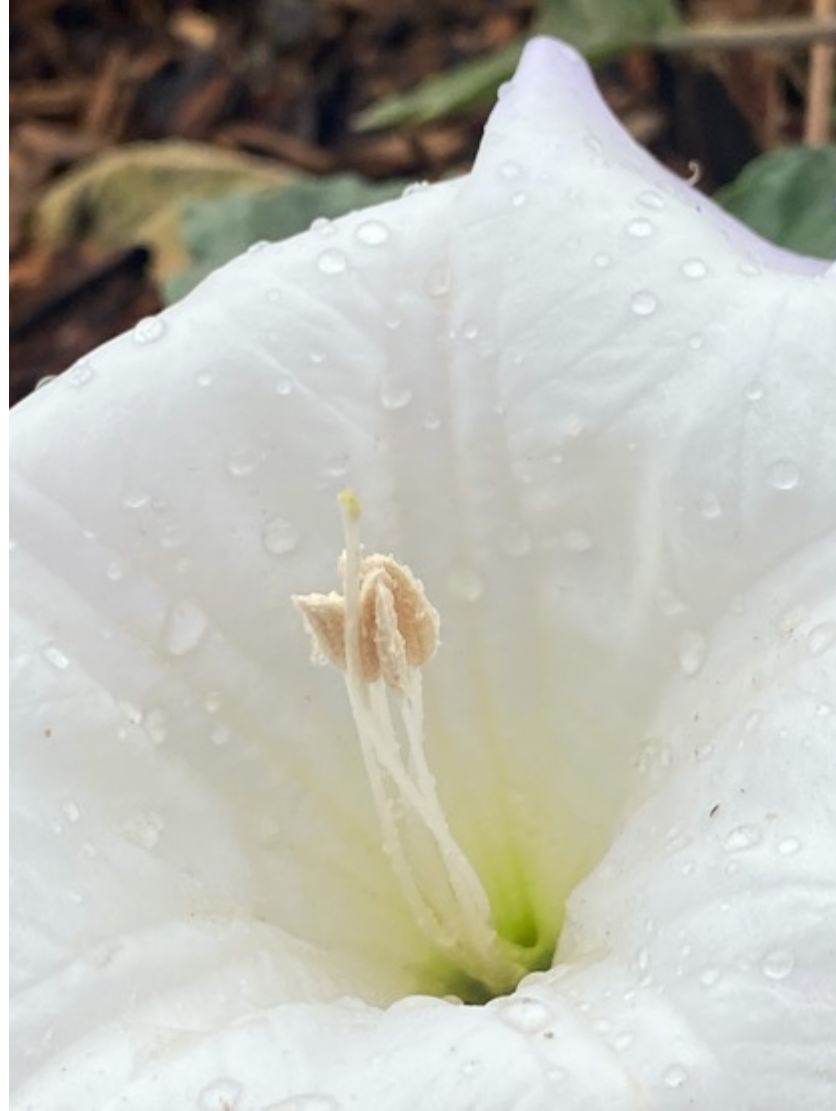


Gold's Gym Native Tree and Demonstration Garden

Gold's Gym - We have planted Coast Live Oaks and native understory plants to replace the dirty weedy patch.



before



Venice Skill Center Native Tree and Demonstration Garden

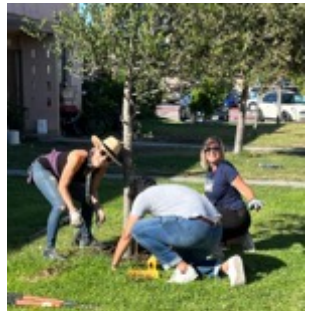
Venice Skill Center – On the west side of the block we have planted trees and plants endemic to the Channel Islands including Island Ironwood and Catalina Cherry.

On the east side we have planted natives which are rarely grown as street trees such as So. Ca. Black Walnut, Engelmann Oaks and Velvet Ash.



Mar Vista Gardens Tree Care

Mar Vista Gardens Section 8 Housing Project – VVG regularly support the trees and the people who live here by doing native tree care.



Tree and Bird Education and Identification Walks

Working with local tree and bird experts, VVG takes quarterly educational walks throughout the neighborhood to help us learn more about our trees.



Tree Planting and the Eucs of Abbott Kinney

Abbott Kinney, Founder of Venice was instrumental to bring Eucalyptus to California. As part of the Venice cultural history, we are interested in this history and in finding appropriate location to plant more resilient species.



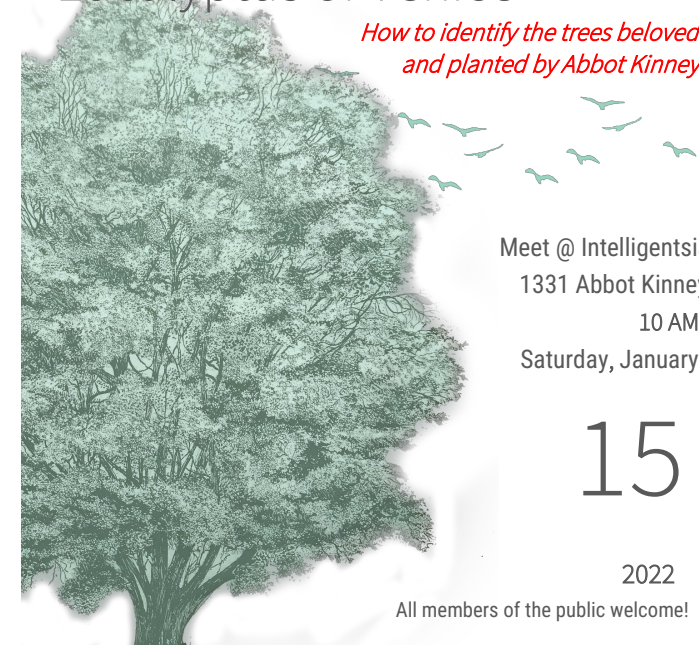
VERDANT VENICE GROUP
invites you to our quarterly



TREE WALK

Eucalyptus of Venice

*How to identify the trees beloved
and planted by Abbot Kinney*



Meet @ Intelligentsia
1331 Abbot Kinney
10 AM
Saturday, January

15

2022

All members of the public welcome!

By the late-1920s, the gondolas were gone, but folks still found ways to have fun on the water. These canals are identified as Altair Canal on the left and Cabrillo Canal on the right, with "United States Island" between them, a development with rental bungalows each named for a state. Security Pacific National Bank Collection, Image #00009240.

Venice Blvd Agriperm Removal

With support from the City Urban Forestry Division, VVG removed agriperm or permeable concrete from more than 75 sycamores trees on Venice Blvd. over the course of 2 years. We mulched and watered the trees. UFD picked up the concrete.



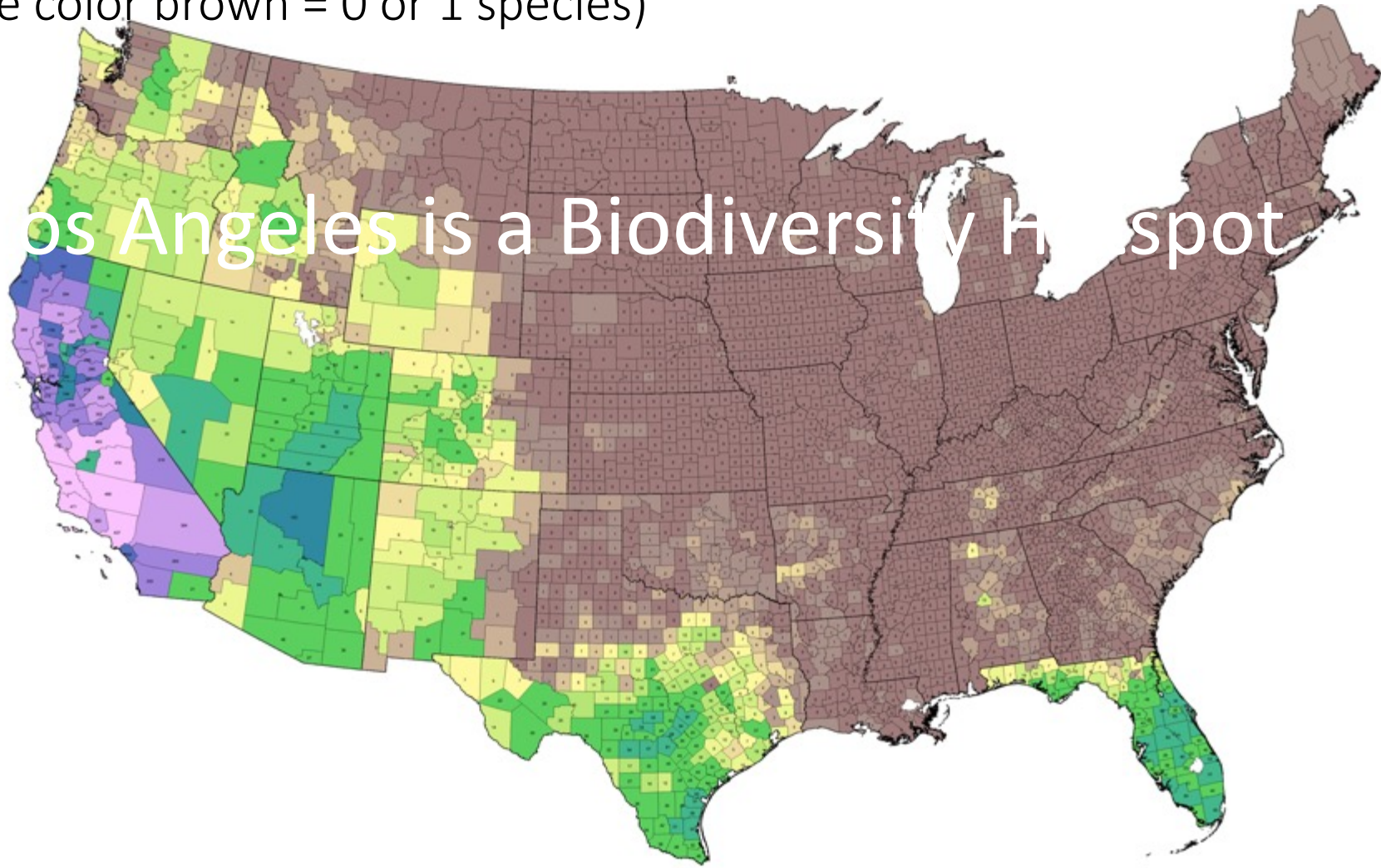
Native Plant Garden At Tabor Court

With a grant from the LA Beautification Team and support of LA Department of Transportation, VVG is restoring the native plants in this one block long planting bed in the heart of Venice- Abbott Kinney and Venice Blvd.



Why does VVG plant natives whenever we can?

There are 437 species in Los Angeles that exist nowhere else on the planet. Development and invasive species are putting them at risk. Look at the number of species endemic to most of the county. (The color brown = 0 or 1 species)



Biodiversity In Los Angeles

There are at least 449 plant species documented in the City, possibly up to 1,127 species present according to the City of LA Biodiversity Report



Figure 10: Example Native Flora of Los Angeles
TL: *Bigcone Douglas-fir* (*Pseudotsuga macrocarpa*), one of LA's few native conifer trees. © Stephanie Calloway, <http://www.inaturalist.org/photos/5527134>
TR: *Fragrant pitcher sage* (*Lepechinia fragrans*), © scott.zona, <https://www.inaturalist.org/photos/536457>
BLT: *Purple owl's clover* (*Castilleja exserta*), © sarahwemmer, <https://www.inaturalist.org/photos/6375308>
BLB: *Bright green dudleya* (*Dudleya vires*), © vireolanius, <https://www.inaturalist.org/taxa/79821-Dudleya-virens-virens>
TR: *California poppy* (*Eschscholzia californica*), © Hartwig Adam, <https://www.inaturalist.org/photos/9520929>



Figure 12: Example Native Flora of Los Angeles
TL: *Dune buckwheat* (*Eriogonum parviflorum*), host plant for the El Segundo blue butterfly, © James Bailey, <http://www.inaturalist.org/photos/2871733>
TLB: *Valley oak* (*Quercus lobata*), © Carol Blaney, <https://www.inaturalist.org/photos/11977089>
TR: *California buckwheat* (*Eriogonum fasciculatum*), © Naomi Fraga, <https://www.inaturalist.org/photos/10810281>
BL: *Coast sanflower* (*Encelia californica*), © subshikar, <https://www.inaturalist.org/photos/7492762>
BR: *Purple sage* (*Salvia leucophylla*), © Timothy Gallagher, <https://www.inaturalist.org/photos/7807776>

Biodiversity In Los Angeles

There are 325 native bird species (292 in Built-Up Areas) and 215 moth and butterfly species

Native birds, moths, and butterflies need native plants to survive since they have evolved together for millennium



Figure 13: Example Native Birds of Los Angeles
 TL: California quail; © NHM Citizen Science Program, <http://www.naturalist.org/photos/5127119>
 TR: Townsend's warbler; © jmaley, <https://www.inaturalist.org/photos/11576998>
 MR: Western snowy plover (Federally Threatened); © Mike Baird, <http://www.flickr.com/photos/mikebaird/324187595/>
 BL: Hooded oriole; © jburch, <https://www.inaturalist.org/photos/7539398>
 BR: California least tern chick (Federally Endangered); © Jennifer Rycenga, <http://www.inaturalist.org/photos/927321>



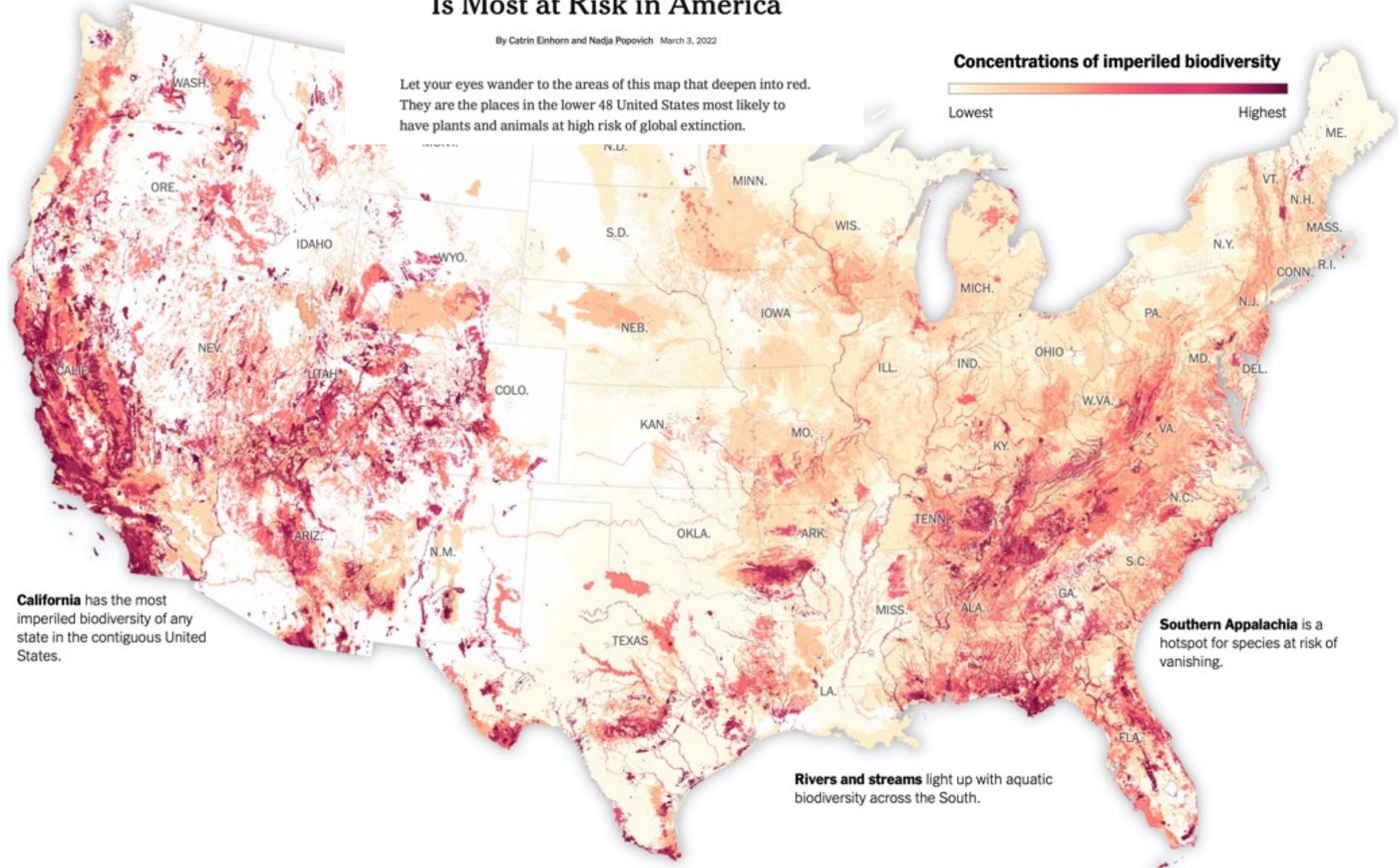
Figure 14: Example Native Butterflies and Moths of Los Angeles
 TL: Monarch; © Thomas Bresson, <https://www.flickr.com/photos/computerhotline/3877362343/>
 TR: White line sphinx; © Adam Searcy, <https://www.inaturalist.org/photos/4622175>
 BL: Palos Verdes blue butterfly (Federally Endangered); © Travis Lingone, <https://www.inaturalist.org/taxa/236268-Glaucopsyche-hylenus-palosverdesensis>
 BR: Red admiral; © Dries & Marcon, <https://www.inaturalist.org/taxa/49133-Vanessa-atalanta>
 MR: Anise swallowtail; © Peter Prehn, <https://www.inaturalist.org/taxa/51097-Papilio-zelicaon>

This Map Shows Where Biodiversity Is Most at Risk in America

By Catrin Einhorn and Nadja Popovich March 3, 2022

Let your eyes wander to the areas of this map that deepen into red. They are the places in the lower 48 United States most likely to have plants and animals at high risk of global extinction.

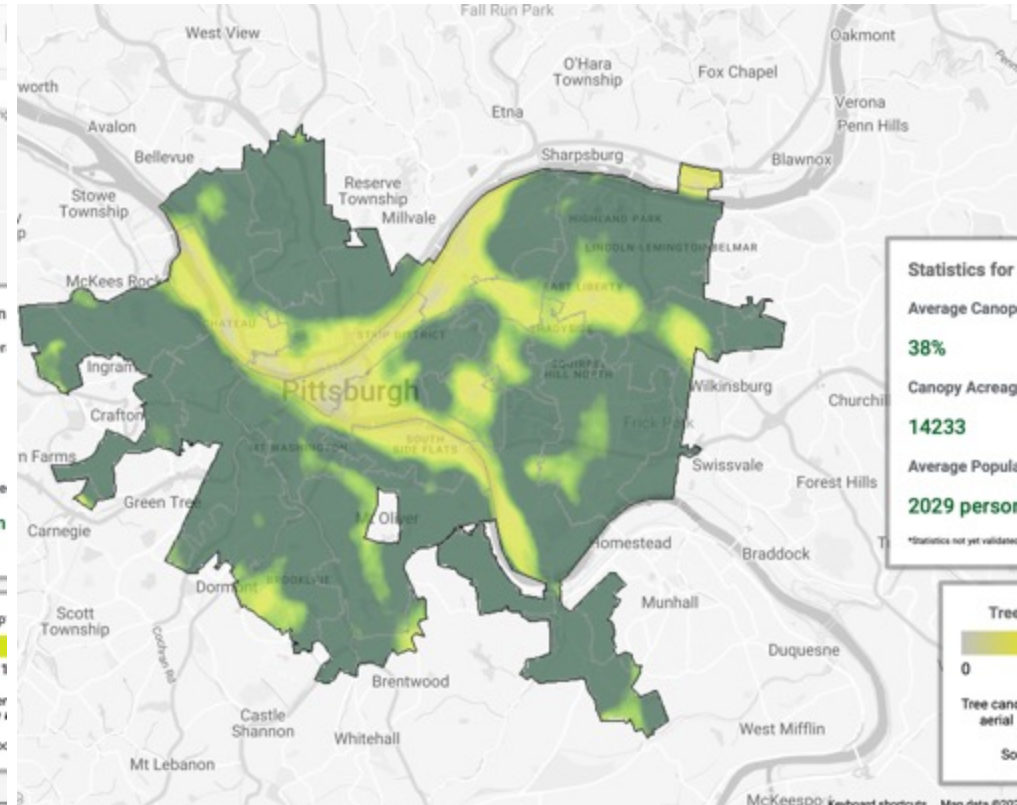
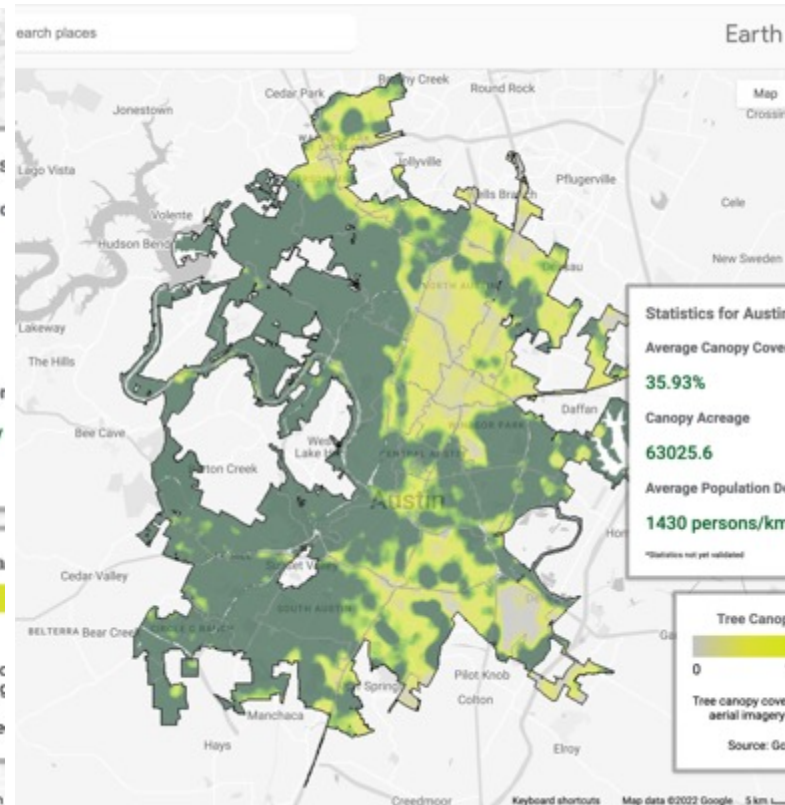
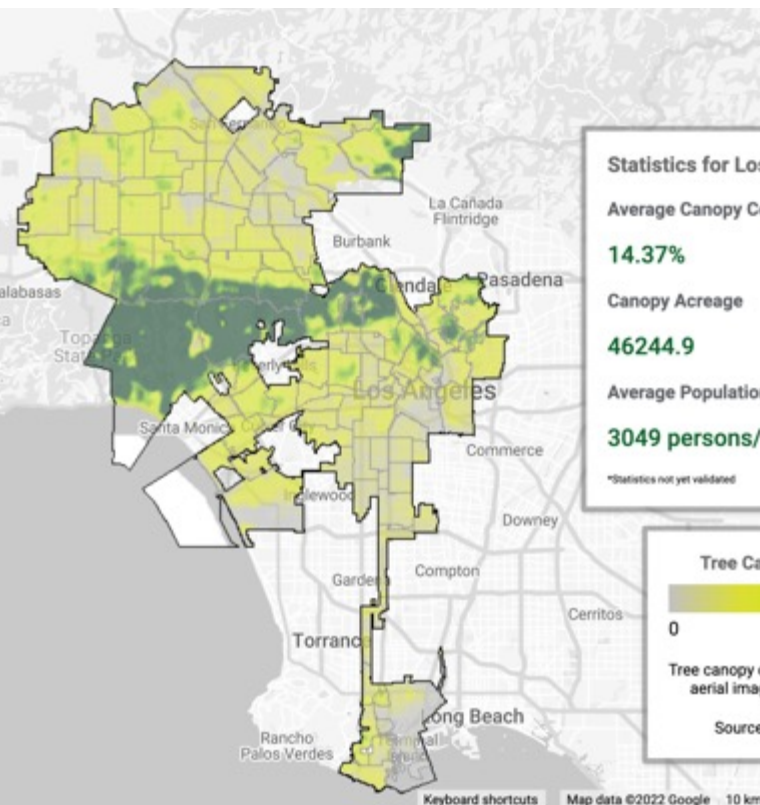
Concentrations of imperiled biodiversity



California has the most imperiled biodiversity of any state in the contiguous United States.

Southern Appalachia is a hotspot for species at risk of vanishing.

Rivers and streams light up with aquatic biodiversity across the South.

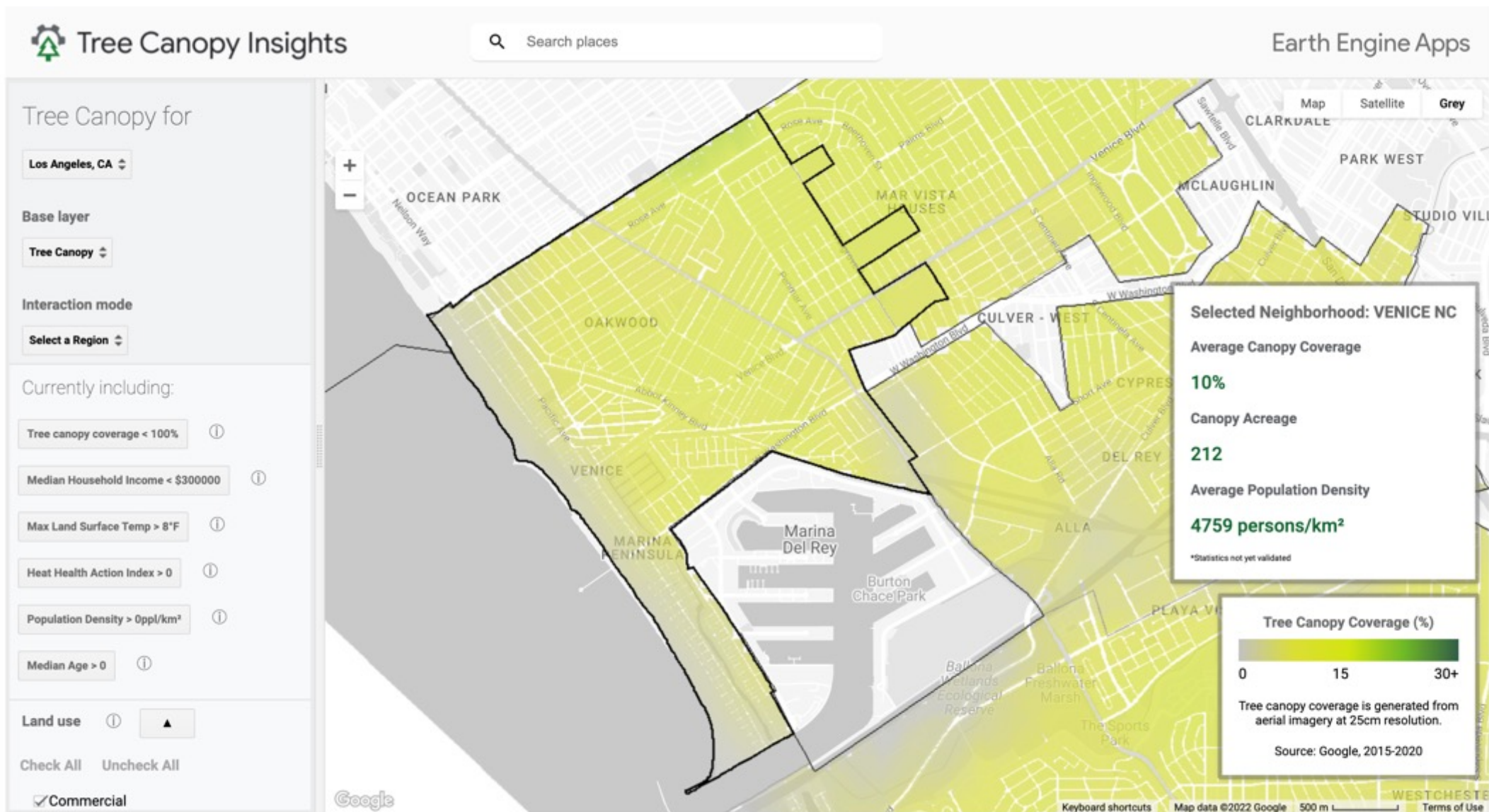


How Does Our Tree Canopy We Compare to Other Cities? Los Angeles vs. Austin, Texas and Pittsburg 14% vs. 36% and 38%

Details behind the data: Google uses aerial imagery collected by planes around the globe to improve Google Maps and Google Earth. In the Tree Canopy Lab, we use this same imagery to estimate tree canopy coverage across U.S. cities.
<https://insights.sustainability.google/labs/treecanopy>

Venice has 10% tree canopy

Venice has less tree canopy than the average in Los Angeles and since we are not considered a low income neighborhood we do not receive the services that other more needy neighborhoods receive from City, State, and Federal Grant programs.



Thank you
@Verdant_Venice_Group

