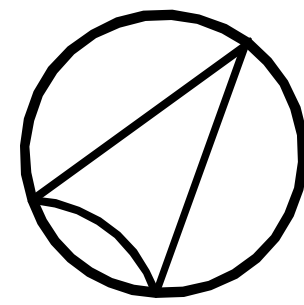


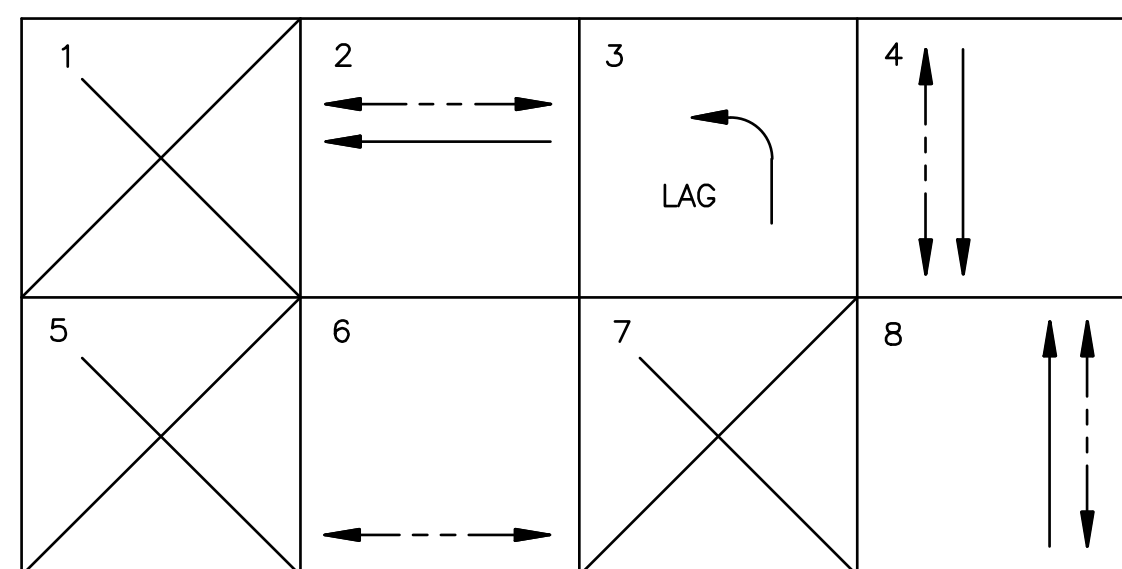
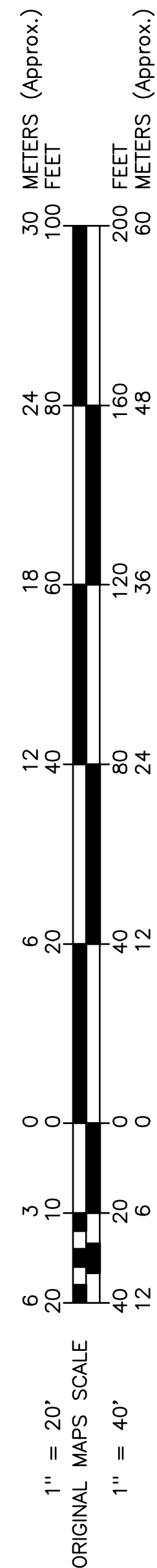
SIGNAL STANDARD SCHEDULE

No.	TYPE	FOUND. TYPE	PED. PUSH BUT'N		REMARKS
			TYPE	PHASE	
(X) ①	8	F-8	-	-	***; AUXILIARY VIDEO CABINET
(X) ②	C-2	**	-	-	*, **; VIDEO CAMERA STD. W/15' M.A.
○					
○					
○					
○					
○					
○					

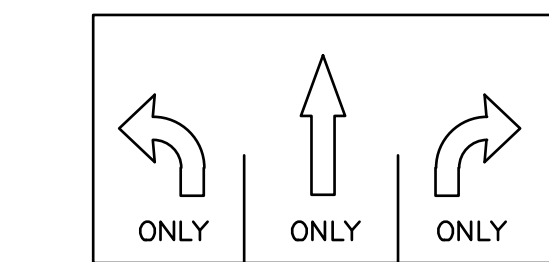
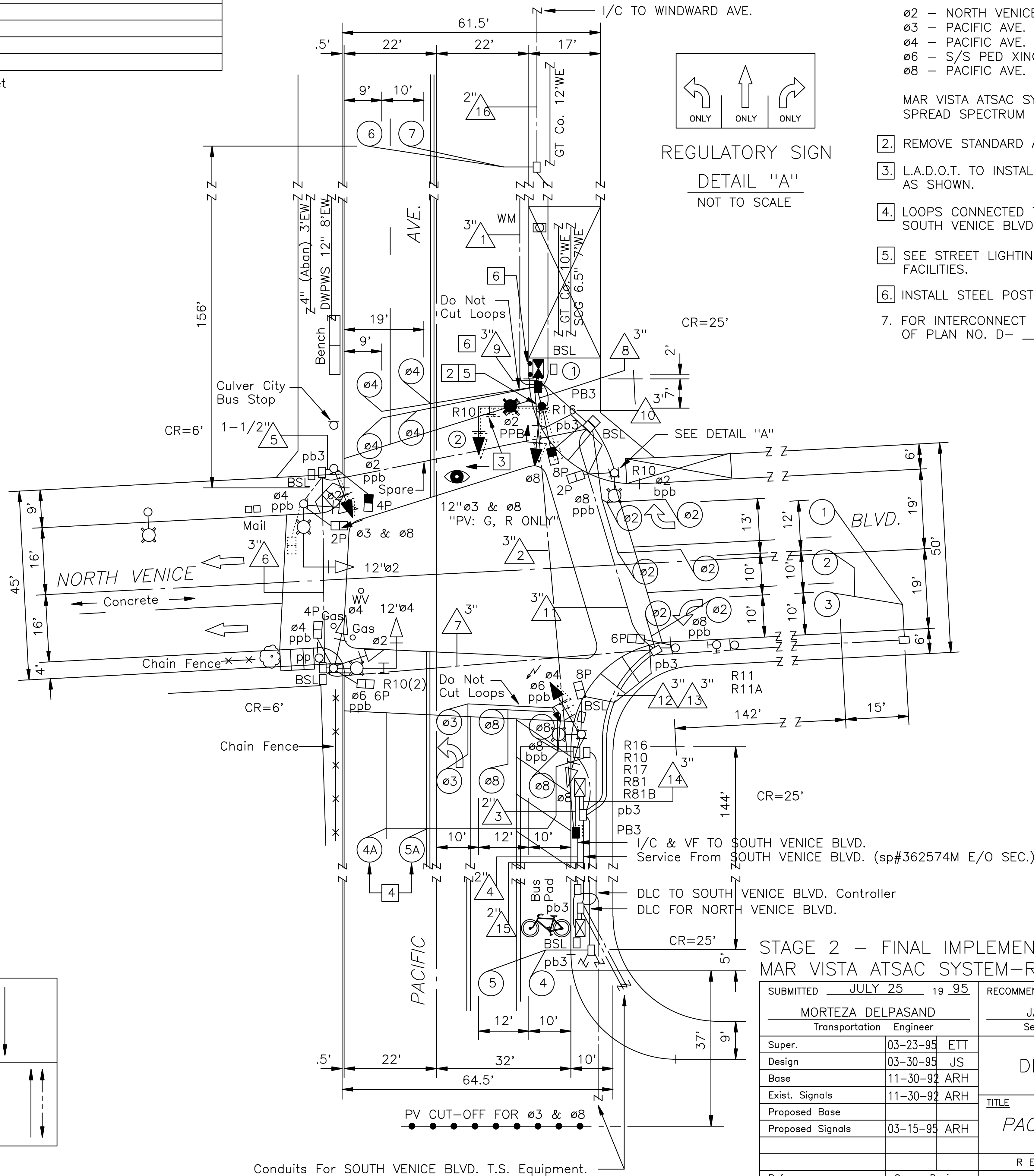
* For reference only; see Street Lighting sheet
 ** See L.A.D.O.T. Std. Dwg. No. S-52.1.4B
 *** In 337 Cabinet



SCALE: 1"=20'



PROPOSED PHASE DIAGRAM

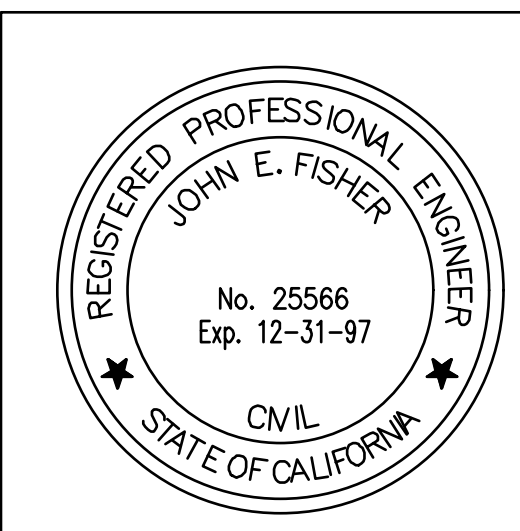


REGULATORY SIGN
 DETAIL "A"
 NOT TO SCALE

NOTES:

- FULLY-ACTUATED OPERATION (ATSAC 170 CONTROLLER)
 - ø2 - NORTH VENICE BLVD. W/B & N/S PED XING.
 - ø3 - PACIFIC AVE. N/B LEFT TURN.
 - ø4 - PACIFIC AVE. S/B & W/S PED XING.
 - ø6 - S/S PED XING.
 - ø8 - PACIFIC AVE. N/B & E/S PED XING.
- REMOVE STANDARD AND FOUNDATION; ABANDON CONDUITS.
- L.A.D.O.T. TO INSTALL R10 AND R16 SIGNS APPROXIMATELY AS SHOWN.
- LOOPS CONNECTED TO CONTROLLER AT PACIFIC AVE. AND SOUTH VENICE BLVD.
- SEE STREET LIGHTING SHEET FOR WORK ON STREET LIGHTING FACILITIES.
- INSTALL STEEL POST PER L.A.D.O.T.
- FOR INTERCONNECT CONSTRUCTION DETAILS SEE SHEET _____ OF PLAN NO. D- _____

MAR VISTA ATSAC SYSTEM
 SPREAD SPECTRUM RADIO/DIRECT WIRE (CABLE) INTERCONNECT



STAGE 2 - FINAL IMPLEMENTATION
 MAR VISTA ATSAC SYSTEM-RADIO/CABLE I/C

SUBMITTED	JULY 25 19 95	RECOMMENDED	AUG. 29 19 95	APPROVED	AUG. 29 19 95
MORTEZA DELPASAND Transportation Engineer		JACK MASSOPUST Senior Transp. Engineer		JOHN E. FISHER Principal Transp. Engineer	
Super.	03-23-95 ETT	CITY OF LOS ANGELES DEPARTMENT OF TRANSPORTATION ROBERT R. YATES, General Manager			
Design	03-30-95 JS				
Base	11-30-92 ARH				
Exist. Signals	11-30-92 ARH				
Proposed Base		TITLE PACIFIC AVE. & NORTH VENICE BLVD.			
Proposed Signals	03-15-95 ARH	REVISIONS			
References	Geom. Design	BY	APPR.	DATE	Project No.
FIELD CHECK					DES-73016
PROJ. NO.74429	District				CON-73017
CALTRANS	ATSAC Design				FILE:
PROJ. NO.74224					MARV20RC

AS BUILT

COND. AS OF 2-20-98
 INSTALLED MUI/DPH/ARH

Conduits For SOUTH VENICE BLVD. T.S. Equipment.

SOUTH VENICE BLVD.