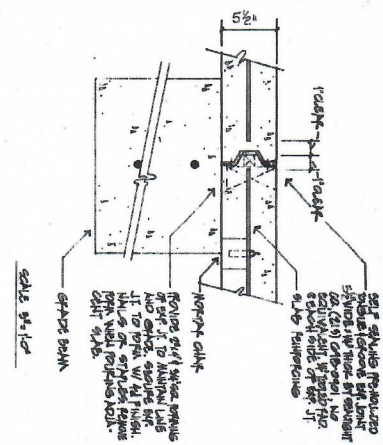
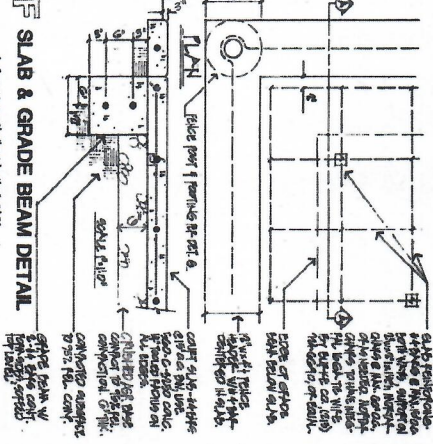


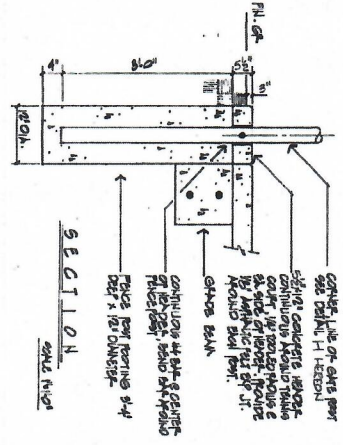
A EXPANSION JOINT AND GRADE BEAM PLAN



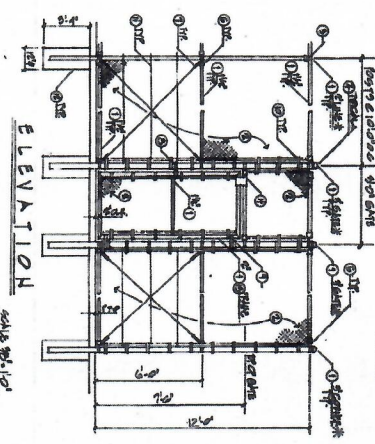
B LAYOUT AND STRIPING PLAN



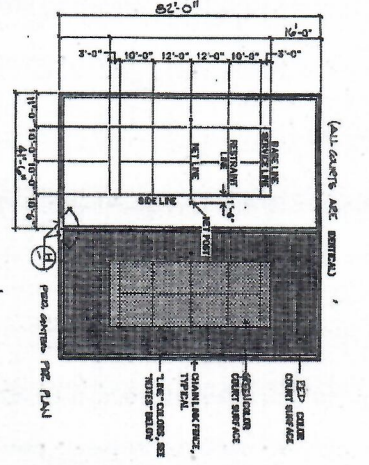
C PADDLE TENNIS NET AND POST



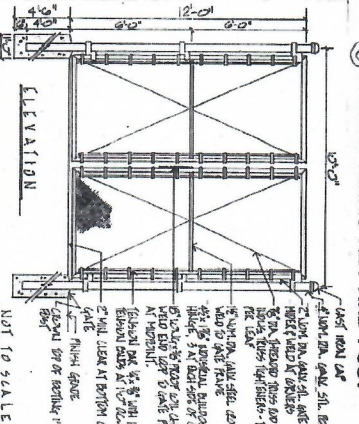
D EXPANSION JOINT DETAIL



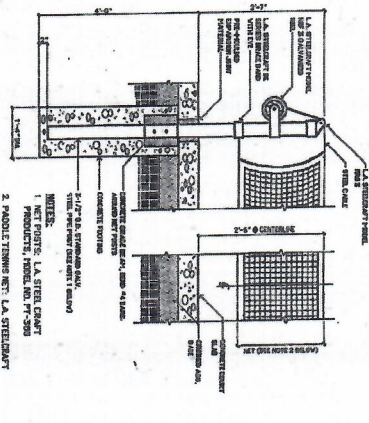
E SLAB & GRADE BEAM DETAIL



F CHAIN LINK PEDESTRIAN GATE



G 10' WIDE DOUBLE GATE

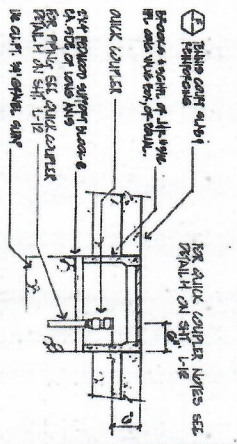


H CHAIN LINK FENCE POST FOOTING

CHANGES & REVISIONS:

1. CHAIN LINK FENCE MATERIALS LEGEND: REVISED CHAIN LINK FENCE MATERIALS LEGEND TO INCLUDE CHAIN LINK FENCE POST FOOTING DETAIL. SEE SECTION H FOR DETAILS.

QUICK COUPLER



QUICK COUPLER

- QUICK COUPLER**
1. QUICK COUPLER - SHALL BE AS SHOWN ON SHEET 1-14.
 2. SHALL BE INSTALLED ON GRADE BEAM WITH 1" CLEARANCE BETWEEN QUICK COUPLER AND GRADE BEAM.
 3. SHALL BE INSTALLED ON GRADE BEAM WITH 1" CLEARANCE BETWEEN QUICK COUPLER AND GRADE BEAM.
 4. SHALL BE INSTALLED ON GRADE BEAM WITH 1" CLEARANCE BETWEEN QUICK COUPLER AND GRADE BEAM.

QUICK COUPLER

- QUICK COUPLER**
1. CHAIN LINK FENCE MATERIALS LEGEND: REVISED CHAIN LINK FENCE MATERIALS LEGEND TO INCLUDE CHAIN LINK FENCE POST FOOTING DETAIL. SEE SECTION H FOR DETAILS.
 2. CHAIN LINK FENCE MATERIALS LEGEND: REVISED CHAIN LINK FENCE MATERIALS LEGEND TO INCLUDE CHAIN LINK FENCE POST FOOTING DETAIL. SEE SECTION H FOR DETAILS.
 3. CHAIN LINK FENCE MATERIALS LEGEND: REVISED CHAIN LINK FENCE MATERIALS LEGEND TO INCLUDE CHAIN LINK FENCE POST FOOTING DETAIL. SEE SECTION H FOR DETAILS.
 4. CHAIN LINK FENCE MATERIALS LEGEND: REVISED CHAIN LINK FENCE MATERIALS LEGEND TO INCLUDE CHAIN LINK FENCE POST FOOTING DETAIL. SEE SECTION H FOR DETAILS.

NO.	DATE	DESCRIPTION	BY	CHKD.
1	4-15-88	REVISED CHAIN LINK FENCE MATERIALS LEGEND TO INCLUDE CHAIN LINK FENCE POST FOOTING DETAIL. SEE SECTION H FOR DETAILS.	RLM, KD	RLM, KD
2	4-15-88	REVISED CHAIN LINK FENCE MATERIALS LEGEND TO INCLUDE CHAIN LINK FENCE POST FOOTING DETAIL. SEE SECTION H FOR DETAILS.	RLM, KD	RLM, KD
3	4-15-88	REVISED CHAIN LINK FENCE MATERIALS LEGEND TO INCLUDE CHAIN LINK FENCE POST FOOTING DETAIL. SEE SECTION H FOR DETAILS.	RLM, KD	RLM, KD