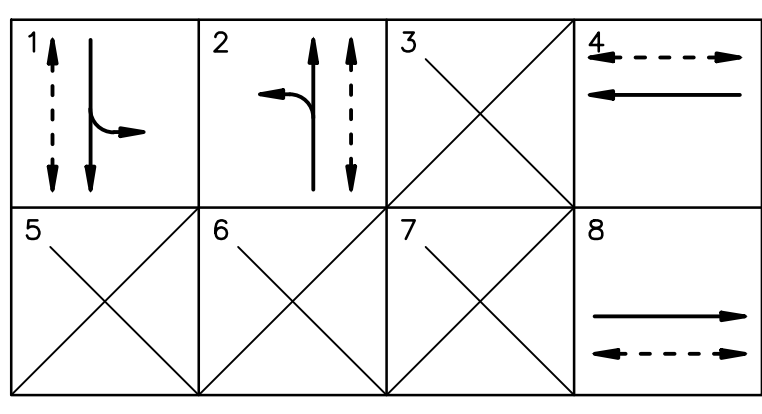


SIGNAL STANDARD SCHEDULE					
No.	TYPE	FOUND. TYPE	PED. PUSH BUT'N TYPE	PHASE	REMARKS
1	332 Cab	F-332	-	-	ATSAC 2070 Controller in 332 Cabinet
2	CD814	F-2	-	-	
3	7	F-7	APS(8P)	8	INSTALL APS
4	1	F-1	APS(1P)	1	INSTALL APS
5	1	F-1	APS(4P)	4	INSTALL APS
6	1	F-1	APS(4P)	4	INSTALL APS
7	CD814	F-2	APS(4P)	4	INSTALL APS
8	1	F-1	APS(2P)	2	INSTALL APS
9	1	F-1	APS(8P)	8	INSTALL APS
10	1	F-1	APS(8P)	8	INSTALL APS

\* Existing



PROPOSED PHASE DIAGRAM

ESTIMATED MATERIAL FURNISHED BY LADOT	
UNITS	MATERIAL

ESTIMATED SALVAGE MATERIAL TO BE RETURNED TO LADOT	
UNITS	MATERIAL

NOTES:

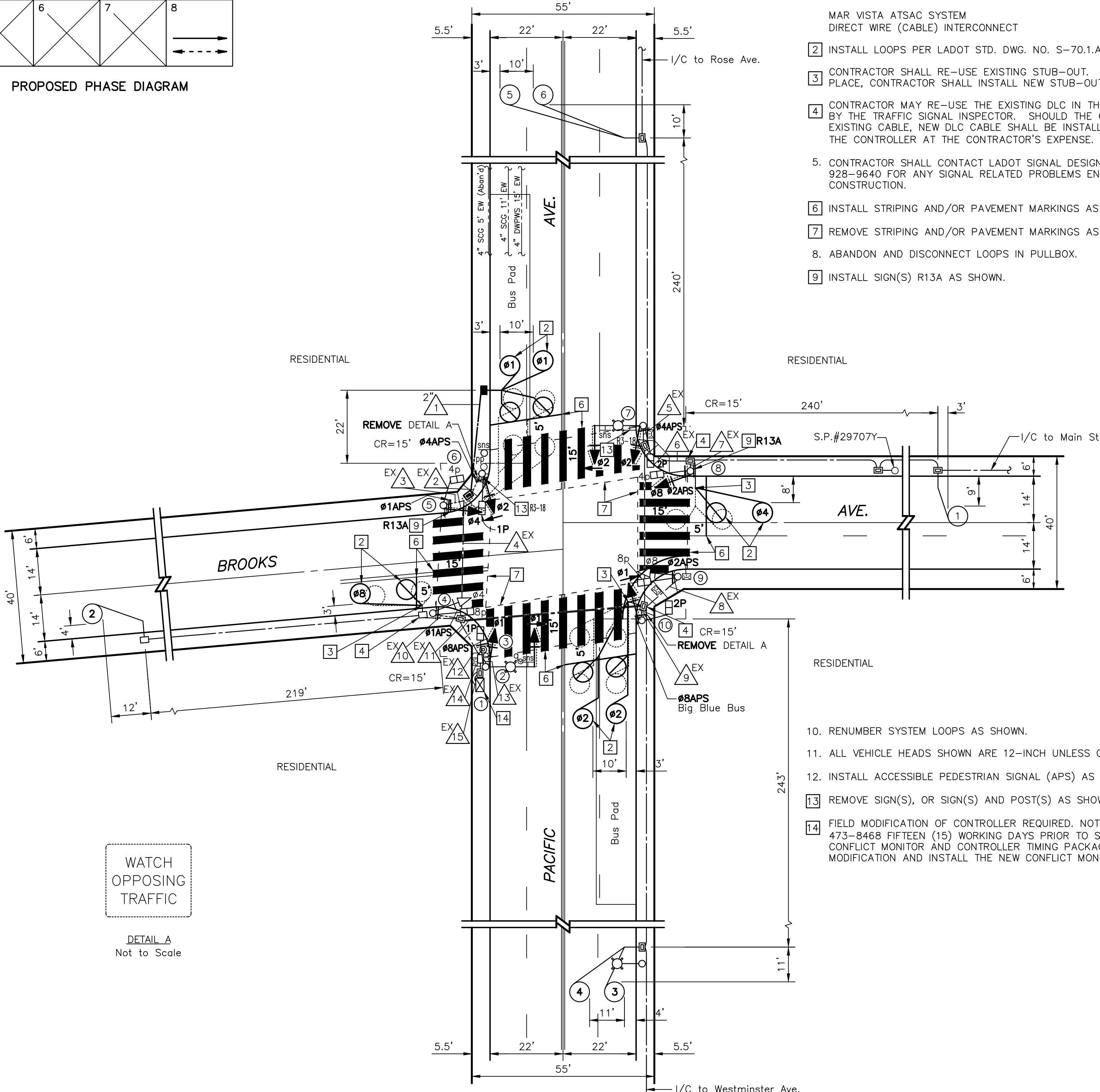
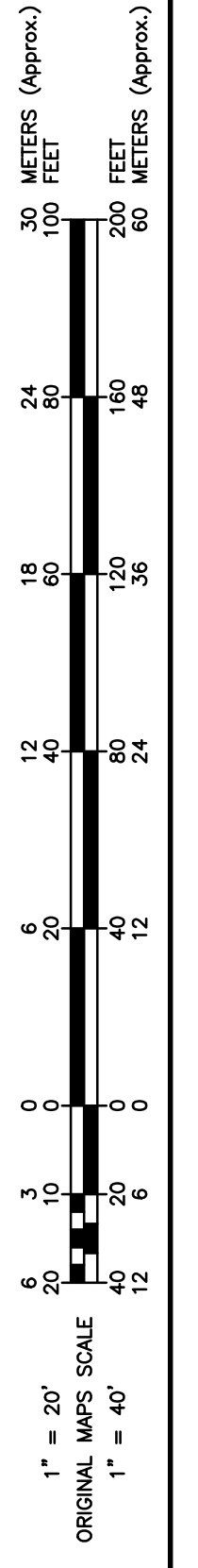
- FULLY-ACTUATED OPERATION (ATSAC 2070 CONTROLLER IN 332 CABINET)
  - Ø1 - PACIFIC AVE. SB, SB LT & W/S PED. XING
  - Ø2 - PACIFIC AVE. NB, NB LT & E/S PED. XING
  - Ø4 - BROOKS AVE. WB & N/S PED. XING
  - Ø8 - BROOKS AVE. EB & S/S PED. XING
- MAR VISTA ATSAC SYSTEM DIRECT WIRE (CABLE) INTERCONNECT
- INSTALL LOOPS PER LADOT STD. DWG. NO. S-70.1.A & S-70.1.D CASE II.
- CONTRACTOR SHALL RE-USE EXISTING STUB-OUT. IF STUB-OUT IS NOT IN PLACE, CONTRACTOR SHALL INSTALL NEW STUB-OUT PER LADOT DWG. S-70.1.A.
- CONTRACTOR MAY RE-USE THE EXISTING DLC IN THE PULLBOX AS DETERMINED BY THE TRAFFIC SIGNAL INSPECTOR. SHOULD THE CONTRACTOR DAMAGE THE EXISTING CABLE, NEW DLC CABLE SHALL BE INSTALLED FROM THE PULLBOX TO THE CONTROLLER AT THE CONTRACTOR'S EXPENSE.
- CONTRACTOR SHALL CONTACT LADOT SIGNAL DESIGN SECTION AT (213) 928-9640 FOR ANY SIGNAL RELATED PROBLEMS ENCOUNTERED DURING CONSTRUCTION.
- INSTALL STRIPING AND/OR PAVEMENT MARKINGS AS SHOWN.
- REMOVE STRIPING AND/OR PAVEMENT MARKINGS AS SHOWN.
- ABANDON AND DISCONNECT LOOPS IN PULLBOX.
- INSTALL SIGN(S) R13A AS SHOWN.

CONDUCTOR SCHEDULE		RUN															
SIZE No.	CABLE / WIRE	1	2	3	4	5	6	7	8	9	10	11	12	13	14	15	16
3	CONDUCTOR CABLE 3 X #14																
5	CONDUCTOR CABLE 5 X #14																
9	CONDUCTOR CABLE 8 X #14 & 1 X #10 (COM)	1	1	1	1												
13	CONDUCTOR CABLE 12 X #14 & 1 X #10 (COM)																
28	CONDUCTOR CABLE 27 X #14 & 1 X #10 (COM)																
6	SERVICE																
14	PED PUSHBUTTON	2	2	2	2	2	2	2	2	2	2	2	2	2	2	2	
12	BUS DLC (1-PAIR)																
18	DLC (2 PAIR)	1	1														
18	DLC (3 PAIR)																
18	DLC (4 PAIR)																
14	DLC (EXISTING)																
22	I/C (12 PAIR)																
	ACCESSIBLE PEDESTRIAN SIGNAL (APS)	2	2	2	2	2	2	2	2	2	2	2	2	2	2	2	
	CONDUIT SIZE	2"	2"	2"	2"	2"	2"	2"	2"	2"	2"	2"	2"	2"	2"	2"	

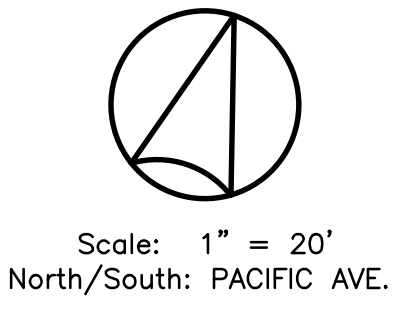
NOTE: FOR EXISTING CONDUIT RUNS DESIGNATED WITH AN "\*" (ABOVE), THE CONTRACTOR SHALL ADD/INSTALL NEW CONDUCTORS/CABLES AND PROTECT AND MAINTAIN ALL EXISTING CONDUCTORS/CABLES.

NOTICE TO CONTRACTOR

- EXCEPT WHERE OTHERWISE INDICATED, MATERIALS AND INSTALLATION METHODS SHALL CONFORM TO THE LATEST EDITION, WITH SUPPLEMENTS, OF THE STANDARD SPECIFICATIONS FOR PUBLIC WORKS CONSTRUCTION, ADOPTED BY THE CITY OF LOS ANGELES BOARD OF PUBLIC WORKS (LABPW), INCLUDING THE LATEST VERSION OF STANDARD PLAN S-610 ISSUED BY THE LABPW, AND THE LATEST EDITION, WITH AMENDMENTS, OF THE SPECIAL PROVISIONS AND STANDARD DRAWINGS FOR THE INSTALLATION AND MODIFICATION OF TRAFFIC SIGNALS, ISSUED BY THE CITY OF LOS ANGELES DEPARTMENT OF TRANSPORTATION (LADOT).
- ALL TRAFFIC SIGNAL AND/OR RELATED ELECTRICAL WORK SHALL BE PERFORMED AND INSPECTED UNDER THE CONDITIONS OF THE MOST CURRENT AMENDED BOARD OF PUBLIC WORKS "ENHANCED ELECTRICAL SAFETY POLICY" AS REQUIRED IN LADOT'S SPECIAL PROVISIONS AND STANDARD DRAWINGS FOR THE INSTALLATION AND MODIFICATION OF TRAFFIC SIGNALS (RED BOOK), REGARDLESS OF CONTRACT COST.
- THE LADOT TRAFFIC SIGNAL INSPECTOR AT (213) 485-1071 SHALL BE NOTIFIED THREE (3) WORKING DAYS PRIOR TO THE BEGINNING OF CONSTRUCTION. FOR WORK IN THE AUTOMATED TRAFFIC SURVEILLANCE AND CONTROL (ATSAC) PROJECT AREA, A FIELD MEETING SHALL BE SCHEDULED WITH THE ATSAC PROJECT ENGINEER AT (213) 972-8664 AND THE SIGNAL MAINTENANCE SUPERVISOR AT (213) 485-7721 THREE (3) WORKING DAYS PRIOR TO THE BEGINNING OF CONSTRUCTION. FULL RESTORATION OF THE ATSAC SYSTEM MUST OCCUR WITHIN FIVE (5) WORKING DAYS AFTER SHUT DOWN.
- REGULAR TRAFFIC SIGNAL CONTROL SHALL BE MAINTAINED FROM 6:00 A.M. TO 9:00 A.M. AND 3:00 P.M. TO 7:00 P.M. ON WEEKDAYS, EXCEPT NATIONAL HOLIDAYS. FLASHING, DEACTIVATION AND ACTIVATION OF SIGNALS SHALL BE ACCOMPLISHED ONLY BY A LADOT TRAFFIC SIGNAL ELECTRICIAN. ALL ARRANGEMENTS TO DEACTIVATE SIGNALS SHALL BE MADE 24 HOURS IN ADVANCE BY CONTACTING THE LADOT TRAFFIC SIGNAL DEDICATED LINE AT (213) 473-8478 BEFORE 9:00 A.M. ON NON-HOLIDAY WEEKDAYS. THE LADOT PROJECT NUMBER MUST BE GIVEN AT THIS TIME. THE CONTRACTOR WILL BE CHARGED FOR ALL ELECTRICAL AND TRAFFIC CONTROL SERVICE PROVIDED BY LADOT.
- ARRANGEMENTS FOR OBTAINING ANY MATERIALS IDENTIFIED TO BE SUPPLIED BY LADOT SHALL BE MADE TEN (10) WORKING DAYS IN ADVANCE BY CONTACTING THE LADOT FIELD OPERATIONS DIVISION AT (213) 928-9620. HOWEVER, TRAFFIC SIGNAL CONTROLLERS REQUIRE THIRTY (30) CALENDAR DAYS ADVANCE NOTICE AND MUST BE PICKED UP WITHIN FIFTEEN (15) CALENDAR DAYS AFTER NOTIFICATION. CONTACT LADOT SIGNAL SHOP AT (213) 473-8468 TO COORDINATE CONTROLLER DELIVERY AND/OR PICKUP.
- ALL IDENTIFIED TRAFFIC SIGNAL EQUIPMENT SHALL BE RETURNED TO LADOT. ARRANGEMENTS FOR RETURNING IDENTIFIED EQUIPMENT TO LADOT SHALL BE MADE FIVE (5) WORKING DAYS IN ADVANCE BY CONTACTING THE LADOT MATERIAL CONTROL DIVISION AT (213) 928-9636.
- ALL EXISTING TRAFFIC CONTROL SIGNING SHALL BE MAINTAINED WITH STANDARD SIGN BRACKETS BY THE CONTRACTOR. EXCEPT WHERE OTHERWISE INDICATED, EXISTING LARGE STREET NAME SIGNS ON MAST ARM TYPE STANDARDS SHALL BE RELOCATED FROM THE VERTICAL POLE TO THE MAST ARM PER LADOT STANDARD DRAWING NO. S-457.0 AND S-486.0. THE CONTRACTOR SHALL COORDINATE WITH LADOT SIGN SHOP AT (213) 473-7854 FOR ANY REQUIRED LARGE STREET NAME SIGNS. ANY TRAFFIC CONTROL SIGNING DAMAGED OR LOST BY THE CONTRACTOR SHALL BE REPLACED AT THE CONTRACTOR'S EXPENSE. SIGNAL CONTRACTOR SHALL INSTALL MAST ARM MOUNTED SIGNS.
- THE CONTRACTOR SHALL FURNISH AND INSTALL, AS SHOWN ON THE PLANS, ALL TRAFFIC SIGNAL EQUIPMENT SUCH AS STANDARDS, MAST ARMS, SIGNAL HEADS, AND OTHER EQUIPMENT AS REQUIRED. ALL SUCH EQUIPMENT SHALL BE NEW. ALL VEHICLE HEAD EQUIPMENT SUPPLIED BY THE CONTRACTOR SHALL HAVE 1-1/2 INCH DIAMETER PIPE FIT MOUNTING HARDWARE, INCLUDING ALL TOP POST MOUNT HEADS. PED HEAD MODULE REPLACEMENTS SHOWN ON THE PLAN SHALL REQUIRE A COMPLETE INSTALLATION, INCLUDING NEW PED HEAD AND TERMINAL COMPARTMENT. LEFT TURN SIGNAL HEADS ON MAST ARMS WITH TWO OR MORE SIGNAL HEADS SHALL BE TOP MOUNTED.



WATCH OPPOSING TRAFFIC  
DETAIL A  
Not to Scale



- RENUMBER SYSTEM LOOPS AS SHOWN.
- ALL VEHICLE HEADS SHOWN ARE 12-INCH UNLESS OTHERWISE NOTED.
- INSTALL ACCESSIBLE PEDESTRIAN SIGNAL (APS) AS PER LADOT STD. DWG. NO. S-73.2.
- REMOVE SIGN(S), OR SIGN(S) AND POST(S) AS SHOWN.
- FIELD MODIFICATION OF CONTROLLER REQUIRED. NOTIFY THE LADOT SIGNAL SHOP AT (213) 473-8468 FIFTEEN (15) WORKING DAYS PRIOR TO START OF CONSTRUCTION TO OBTAIN NEW CONFLICT MONITOR AND CONTROLLER TIMING PACKAGE. LADOT WILL MAKE ALL CONTROLLER MODIFICATION AND INSTALL THE NEW CONFLICT MONITOR IN THE EXISTING CONTROLLER CABINET.

DEPARTMENT MODIFICATION

SUBMITTED	JUNE 6, 2013	APPROVED	JUNE 11, 2013
JOHN VARGHESE	Transportation Engineer	MANOOCHER ADACHI	Senior Transportation Engineer



<b>AS BUILT</b>		CITY OF LOS ANGELES DEPARTMENT OF TRANSPORTATION JAIME DE LA VEGA, General Manager	
Date of Installation:		TITLE	<b>BROOKS AVE. &amp; PACIFIC AVE.</b>
LADOT Inspector:		District	WESTERN
Condition As Of:		Thomas Guide	671-G5
LADOT Engineer:		References	PROJ-73016 FILED CHECK
File Name	20940-21.DWG	Intersection No.	20940
Project No.	PROPC000	NOTICE: IF PLAN HAS NOT BEEN IMPLEMENTED WITHIN TWO (2) YEARS OF THE APPROVAL DATE, IT MUST BE RESUBMITTED TO LADOT SIGNAL DESIGN SECTION FOR REVIEW AND APPROVAL.	