



We're supporting thriving communities.

VENICE DIVISION 6 – VNC Land Use and Planning Committee

March 7, 2024

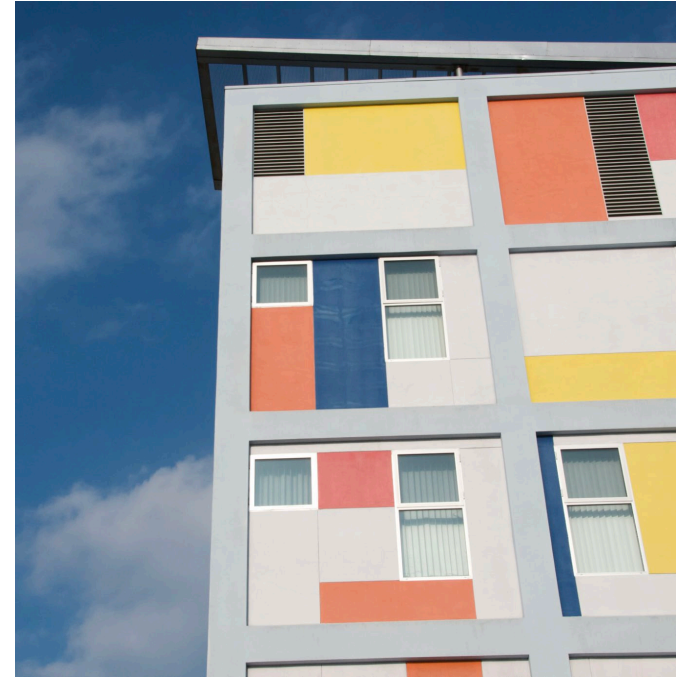


Metro

The Joint Development Program

Metro partners with local jurisdictions, community stakeholders and developers to implement TODs through our *Joint Development Program* in order to:

- > Support community and local jurisdiction vision for station area
- > Encourage housing for diverse income levels
- > Ensure high quality architecture and urban design
- > Increase transit ridership and improve patron experience
- > Generate revenue to reinvest in TOCs



OUR MISSION: *to build as much housing as possible, as quickly as possible, for those who need it most.*

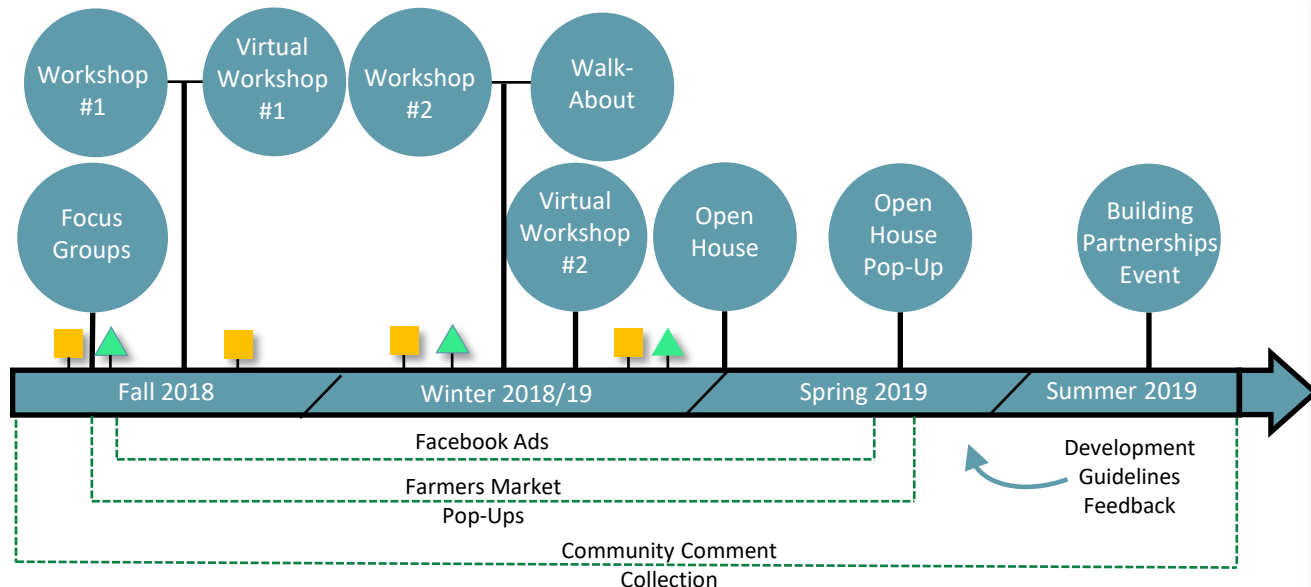


Division 6 Site Overview

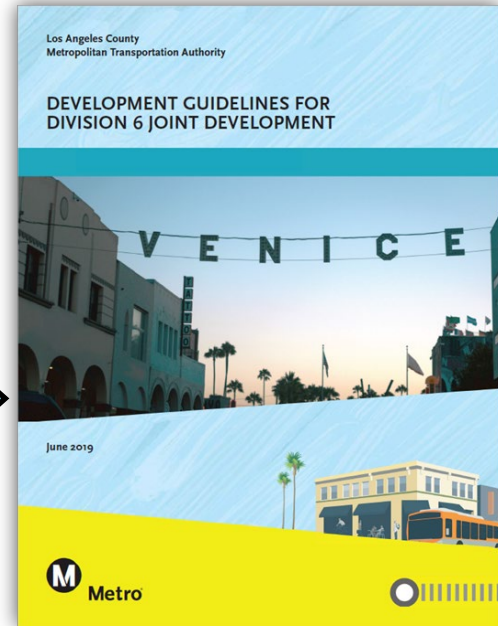
- > Former Metro bus maintenance facility
- > 3.12-acre parcel
- > Located blocks from Venice Beach and Abbot Kinney Boulevard
- > Board motion in early 2016 directing staff to determine permanent re-use for site through JD Program
- > Metro Operations completed the deactivation of Division 6 in late 2016



Community Engagement Process



- – Community Event
- ▲ – Flyer Distribution

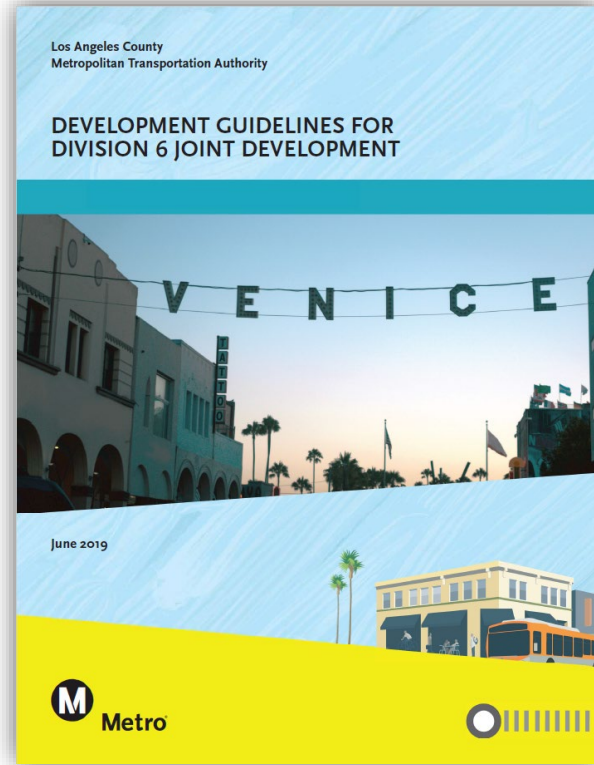


Development Guidelines
Approved June 2019

Division 6 Development Guidelines

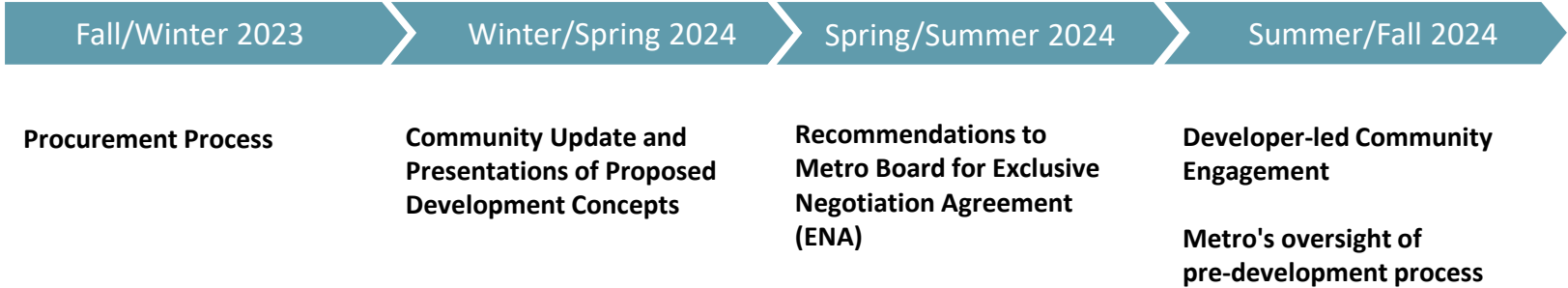
Key Components (Recommendations)

- > Site should be broken up into two blocks divided by a walk street
- > Ground floor to include flexible community space
- > Public art and incorporation of POW-MIA mural
- > Dedicated public parking for coastal access
- > Mobility Enhancements to encourage access to the shore by non-auto uses
- > LEED Gold Sustainability Standard
- > Inclusion of mixed-income housing



Next Steps

**WE
ARE
HERE**



Joint Development - Venice Division 6

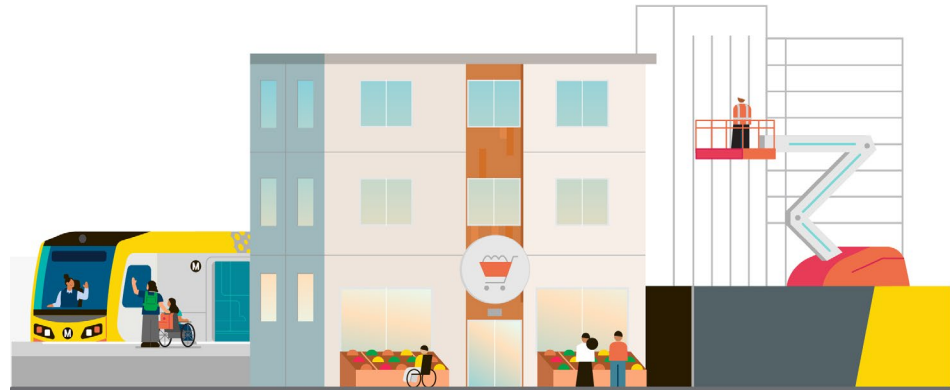
Join Us on
March 18, 2024, at 5:00 pm
for our **Community Meeting and Project Update**

Learn about Metro's steps to identify a long-term plan for the site, meet the project developer finalists, review design concepts and ask the finalists questions. For more information visit Metro.net/projects/jd-division6.

[Zoom link](#)

Webinar ID: 875 6723 2012

Phone: 213 338 8477



Thank you and Stay connected to this project!



Karen Swift, *Director*
Community Relations, Metro



Carey Jenkins, *Senior Director*
Joint Development, Metro



310.431.3333



jointdevelopment@metro.net



Metro.net/projects/jd-division6



@metrolosangeles



Losangelesmetro

